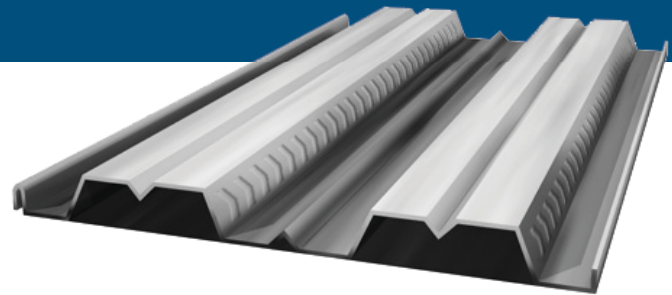




2.0" Cellular Floor Deck



Cellular Deck brought to you by the Customer Service Leader

Cordeck is a full-service manufacturer and stocking distributor of corrugated steel deck, flashing and trim, and other building construction accessories. Cordeck's mission is to provide excellent customer service. This mission is the foundation for industry wide recognition as service leader for prompt, reliable deliveries, guaranteed quality, and large inventory of gauges and profiles. Cordeck's cellular floor deck provides an ideal solution for long spans, flat acoustical ceilings, canopies, and raceways. You can be certain of the product's total, maximum effectiveness, along with our ability to deliver the industry's highest quality, service, value, and customer satisfaction. Please contact us for further information. At Cordeck, we're devoted to our customers. We stand ready to earn, and keep, your full confidence and trust.

Features and Benefits

The addition of the bottom plate increases the span and load carrying capabilities allowing for long spans.

Prompt lead times are our specialty. All orders are promptly produced and shipped to meet your on-site specifications.

Project management and engineering services are offered by Cordeck's full, expert, in-house engineering and detailing services to assure optimal planing and design. Our experienced engineers and technicians provide individual customer service and attention to detail from concept to completion.

AutoCAD® drawings can be transferred electronically for improved quality and reduced time and cost of drawing transmittal.

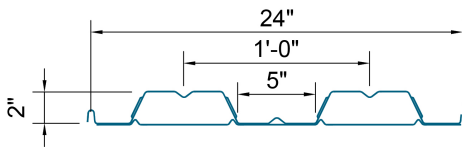
Bundle Placement plans are provided to ensure correct location of bundles during unloading and hoisting to steel framework.

SDI Membership by the manufacturer guarantees product quality in accordance to the Steel Deck Institute (SDI).

On-spec, guaranteed quality. Our production staff are true craftsmen, not just interested in getting the job done, but in doing it perfectly.

Knowledgeable, courteous, caring employees throughout our ranks. We're a "family business"...no "big corporate" attitude here! We genuinely appreciate our customers' patronage and trust, handling every order, regardless of size, with utmost care and attention.

2.0" Cellular Floor Deck



| Gage | Design Thickness in | Fy ksi | Sp in ³ | Sn in ³ | Ip in ⁴ | In in ⁴ | As in ² | Wd psf | Rb lb | ΦVn lb |
|-------|------------------------|-----------|-----------------------|-----------------------|-----------------------|-----------------------|-----------------------|-----------|----------|-----------|
| 20-20 | 0.0359 / 0.0359 | 50 | 0.356 | 0.423 | 0.453 | 0.483 | 0.98 | 3.3 | 1804 | 3650 |
| 18-20 | 0.0478 / 0.0359 | 40 | 0.654 | 0.610 | 0.738 | 0.638 | 1.15 | 3.9 | 2620 | 3850 |
| 18-18 | 0.0478 / 0.0478 | 40 | 0.594 | 0.579 | 0.871 | 0.724 | 1.32 | 4.4 | 2620 | 3850 |
| 16-18 | 0.0598 / 0.0478 | 40 | 0.794 | 0.793 | 0.891 | 0.886 | 1.46 | 5.0 | 3887 | 4840 |
| 16-16 | 0.0598 / 0.0598 | 40 | 0.726 | 0.734 | 0.917 | 0.954 | 1.63 | 5.6 | 3887 | 4840 |

| Total Slab Depth D | Gage | Maximum Unshored | | | Composite Properties | | | | | Superimposed Live Loads - PSF: No Studs | | | | | | | | | | | | | |
|--|------------|------------------|----------------|----------------|-------------------------|-----------------------|----------------|----------------|--------------|---|-------|-------|-------|-------|-------|--------|--------|--------|--------|--------|--------|-----|-----|
| | | Clear Spans | | | Iavg in ⁴ | Sc in ³ | ΦMnf kip-ft | ΦMn0 kip-ft | ΦVnt kips | Span - Feet and Inches | | | | | | | | | | | | | |
| | | Single Span | Double Span | Triple Span | | | | | | 7'-0" | 7'-6" | 8'-0" | 8'-6" | 9'-0" | 9'-6" | 10'-0" | 10'-6" | 11'-0" | 11'-6" | 12'-0" | 12'-6" | | |
| Wt. Conc. | Area Conc. | Single Span | Double Span | Triple Span | Iavg in ⁴ | Sc in ³ | ΦMnf kip-ft | ΦMn0 kip-ft | ΦVnt kips | 7'-0" | 7'-6" | 8'-0" | 8'-6" | 9'-0" | 9'-6" | 10'-0" | 10'-6" | 11'-0" | 11'-6" | 12'-0" | 12'-6" | | |
| 4-1/2" 41.9 psf 30.3 in ² | 20-20 | 8'-6" | 11'-6" | 11'-8" | 8.07 | 2.23 | 118.3 | 94.9 | 5.65 | 400 | 400 | 400 | 400 | 400 | 400 | 362 | 325 | 293 | 265 | 241 | 219 | | |
| | 18-20 | 10'-8" | 12'-3" | 12'-8" | 8.28 | 2.46 | 109.0 | 83.5 | 5.65 | 400 | 400 | 400 | 400 | 395 | 351 | 313 | 281 | 253 | 229 | 207 | 188 | | |
| | 18-18 | 10'-1" | 11'-11" | 12'-4" | 9.97 | 3.21 | 128.8 | 109.1 | 5.65 | 400 | 400 | 400 | 400 | 400 | 400 | 400 | 378 | 341 | 309 | 281 | 256 | | |
| | 16-18 | 11'-8" | 13'-11" | 13'-8" | 9.59 | 3.19 | 128.8 | 109.1 | 5.65 | 400 | 400 | 400 | 400 | 400 | 400 | 400 | 400 | 378 | 341 | 309 | 281 | 256 | |
| | 16-16 | 11'-3" | 13'-4" | 13'-9" | 10.9 | 3.87 | 150.1 | 131.5 | 5.65 | 400 | 400 | 400 | 400 | 400 | 400 | 400 | 400 | 400 | 400 | 379 | 345 | 315 | |
| 5" 47.9 psf 34.6 in ² | 20-20 | 8'-1" | 10'-11" | 11'-1" | 10.85 | 2.64 | 139.1 | 112.1 | 6.44 | 400 | 400 | 400 | 400 | 400 | 400 | 400 | 385 | 348 | 315 | 286 | 261 | | |
| | 18-20 | 10'-1" | 11'-9" | 12'-1" | 11.14 | 2.91 | 128.5 | 98.8 | 6.44 | 400 | 400 | 400 | 400 | 400 | 400 | 373 | 335 | 301 | 273 | 247 | 225 | | |
| | 18-18 | 9'-6" | 11'-5" | 11'-9" | 13.21 | 3.74 | 151.1 | 127.0 | 6.44 | 400 | 400 | 400 | 400 | 400 | 400 | 400 | 400 | 398 | 361 | 328 | 299 | | |
| | 16-18 | 11'-3" | 13'-4" | 13'-3" | 12.83 | 3.76 | 151.1 | 127.0 | 6.44 | 400 | 400 | 400 | 400 | 400 | 400 | 400 | 400 | 400 | 398 | 361 | 328 | 299 | |
| | 16-16 | 10'-8" | 12'-9" | 13'-2" | 14.48 | 4.53 | 177.9 | 153.8 | 6.44 | 400 | 400 | 400 | 400 | 400 | 400 | 400 | 400 | 400 | 400 | 400 | 400 | 370 | |
| 5-1/2" 54 psf 39 in ² | 20-20 | 7'-8" | 10'-6" | 10'-7" | 14.17 | 3.05 | 159.9 | 129.8 | 7.26 | 400 | 400 | 400 | 400 | 400 | 400 | 400 | 400 | 400 | 400 | 366 | 333 | 303 | |
| | 18-20 | 9'-7" | 11'-3" | 11'-7" | 14.57 | 3.38 | 148.1 | 114.8 | 7.26 | 400 | 400 | 400 | 400 | 400 | 400 | 400 | 390 | 352 | 318 | 289 | 263 | | |
| | 18-18 | 9'-1" | 10'-11" | 11'-3" | 17.07 | 4.28 | 173.4 | 145.5 | 7.26 | 400 | 400 | 400 | 400 | 400 | 400 | 400 | 400 | 400 | 400 | 400 | 377 | 344 | |
| | 16-18 | 10'-8" | 12'-9" | 12'-11" | 16.72 | 4.36 | 173.4 | 145.5 | 7.26 | 400 | 400 | 400 | 400 | 400 | 400 | 400 | 400 | 400 | 400 | 400 | 400 | 377 | 344 |
| | 16-16 | 10'-2" | 12'-3" | 12'-8" | 18.74 | 5.20 | 205.8 | 176.8 | 7.26 | 400 | 400 | 400 | 400 | 400 | 400 | 400 | 400 | 400 | 400 | 400 | 400 | 400 | 400 |
| 6" 60 psf 43.6 in ² | 20-20 | 7'-5" | 10'-1" | 10'-2" | 18.08 | 3.48 | 180.7 | 147.9 | 7.71 | 400 | 400 | 400 | 400 | 400 | 400 | 400 | 400 | 400 | 400 | 400 | 400 | 380 | 347 |
| | 18-20 | 9'-2" | 10'-9" | 11'-2" | 18.64 | 3.86 | 167.6 | 131.2 | 7.91 | 400 | 400 | 400 | 400 | 400 | 400 | 400 | 400 | 400 | 400 | 400 | 365 | 332 | 302 |
| | 18-18 | 8'-8" | 10'-5" | 10'-10" | 21.58 | 4.84 | 195.7 | 164.4 | 7.91 | 400 | 400 | 400 | 400 | 400 | 400 | 400 | 400 | 400 | 400 | 400 | 400 | 400 | 390 |
| | 16-18 | 10'-3" | 12'-3" | 12'-7" | 21.3 | 4.97 | 195.7 | 164.4 | 7.91 | 400 | 400 | 400 | 400 | 400 | 400 | 400 | 400 | 400 | 400 | 400 | 400 | 400 | 390 |
| | 16-16 | 9'-8" | 11'-9" | 12'-2" | 23.71 | 5.89 | 233.7 | 200.4 | 8.11 | 400 | 400 | 400 | 400 | 400 | 400 | 400 | 400 | 400 | 400 | 400 | 400 | 400 | 400 |
| 6-1/2" 66.1 psf | 20-20 | 7'-2" | 9'-8" | 9'-9" | 22.62 | 3.91 | 201.6 | 166.2 | 8.15 | 400 | 400 | 400 | 400 | 400 | 400 | 400 | 400 | 400 | 400 | 400 | 400 | 400 | 391 |
| | 18-20 | 8'-11" | 10'-5" | 10'-9" | 23.36 | 4.35 | 187.2 | 147.9 | 8.35 | 400 | 400 | 400 | 400 | 400 | 400 | 400 | 400 | 400 | 400 | 400 | 400 | 376 | 342 |
| | 18-18 | 8'-5" | 10'-1" | 10'-5" | 26.79 | 5.40 | 217.9 | 183.6 | 8.35 | 400 | 400 | 400 | 400 | 400 | 400 | 400 | 400 | 400 | 400 | 400 | 400 | 400 | 400 |
| | 16-18 | 9'-11" | 11'-10" | 12'-2" | 26.61 | 5.60 | 217.9 | 183.6 | 8.35 | 400 | 400 | 400 | 400 | 400 | 400 | 400 | 400 | 400 | 400 | 400 | 400 | 400 | 400 |
| | 16-16 | 9'-5" | 11'-4" | 11'-9" | 29.46 | 6.60 | 261.6 | 224.3 | 9.00 | 400 | 400 | 400 | 400 | 400 | 400 | 400 | 400 | 400 | 400 | 400 | 400 | 400 | 400 |

Product Information Design

- Cordeck certifies that our 2" Cellular Floor Deck has been evaluated in accordance with the applicable SDI Standards and property values for the Uniform Load Tables, and meets or exceeds SDI requirements.
- Load shown in tables is uniformly distributed total (dead plus live) load in psf (kPa). Loads in shaded areas are governed by live load deflection not in excess of L/240, the dead load included in 10 psf (0.478.kPa). All loads are governed by the allowable flexural stress limit of 20 ksi (140 Mpa) maximum yield steel. Where heavy construction loads or other unusual concentrated loads are anticipated during the lifetime of the deck, the specified live load must be increased to offset the effects of the abnormal concentrated load. See Maximum Spans for Construction and Maintenance Loads in the SDI Design Manual.
- The rib width limitations shown are taken at the theoretical intersection points of the flange and web projections. Depending on the radius used, the load table could vary from that shown.
- Span length assumes center to center spacing of supports. Tabulated loads shall not be increased by assuming clear span dimensions.
- The sectional properties for Cordeck 2" Cellular Floor Deck have been evaluated with the latest edition of the American Iron and Steel Institute (AISI) Specification for the Design of Cold-Formed Steel Structural Members.

2.0" Cellular Floor Deck

| 2.0" Cellular Floor Deck 115 psf Normal Weight Concrete | | | | | | | | | | | | | | | | | | | | | | |
|---|------------|------------------------------|-------------|-------------|----------------------|--------------------|-------------|-------------|-----------|---|--------|--------|--------|-----|-----|-----|-----|-----|-----|-----|-----|-----|
| Total Slab Depth D | Gage | Maximum Unshored Clear Spans | | | Composite Properties | | | | | Superimposed Live Loads - PSF: No Studs | | | | | | | | | | | | |
| | | Single Span | Double Span | Triple Span | lavg in ⁴ | Sc in ³ | ΦMnf kip-ft | ΦMn0 kip-ft | ΦVnt kips | Span - Feet and Inches | | | | | | | | | | | | |
| Wt. Conc. | Area Conc. | | | | | | | | | | | | | | | | | | | | | |
| | | 7'-0" | 7'-6" | 8'-0" | 8'-6" | 9'-0" | 9'-6" | 10'-0" | 10'-6" | 11'-0" | 11'-6" | 12'-0" | 12'-6" | | | | | | | | | |
| 4 1/2" 33.2 psf 30.3 in ² | 20-20 | 9'-4" | 12'-5" | 12'-3" | 6.59 | 2.13 | 118.3 | 90.4 | 5.65 | 400 | 400 | 400 | 400 | 400 | 390 | 349 | 314 | 284 | 257 | 234 | 214 | |
| | 18-20 | 11'-8" | 13'-3" | 13'-8" | 6.80 | 2.33 | 109.0 | 79.2 | 5.65 | 400 | 400 | 400 | 400 | 380 | 338 | 302 | 272 | 245 | 222 | 201 | 183 | |
| | 18-18 | 11'-0" | 12'-10" | 13'-4" | 8.21 | 3.07 | 128.8 | 104.2 | 5.65 | 400 | 400 | 400 | 400 | 400 | 400 | 400 | 366 | 331 | 300 | 273 | 250 | |
| | 16-18 | 12'-3" | 15'-0" | 14'-5" | 7.88 | 3.02 | 128.8 | 104.2 | 5.65 | 400 | 400 | 400 | 400 | 400 | 400 | 400 | 400 | 366 | 331 | 300 | 273 | 250 |
| | 16-16 | 12'-4" | 14'-5" | 14'-5" | 8.95 | 3.67 | 150.1 | 124.9 | 5.65 | 400 | 400 | 400 | 400 | 400 | 400 | 400 | 400 | 400 | 400 | 364 | 332 | 304 |
| 5" 38 psf 34.6 in ² | 20-20 | 8'-10" | 11'-10" | 11'-11" | 8.85 | 2.52 | 139.1 | 107.1 | 6.44 | 400 | 400 | 400 | 400 | 400 | 400 | 400 | 374 | 338 | 306 | 279 | 255 | |
| | 18-20 | 11'-1" | 12'-8" | 13'-1" | 9.14 | 2.77 | 128.5 | 94.1 | 6.44 | 400 | 400 | 400 | 400 | 400 | 400 | 361 | 324 | 293 | 265 | 241 | 220 | |
| | 18-18 | 10'-5" | 12'-4" | 12'-9" | 10.87 | 3.58 | 151.1 | 121.6 | 6.44 | 400 | 400 | 400 | 400 | 400 | 400 | 400 | 387 | 351 | 320 | 292 | | |
| | 16-18 | 11'-11" | 14'-5" | 14'-0" | 10.55 | 3.57 | 151.1 | 121.6 | 6.44 | 400 | 400 | 400 | 400 | 400 | 400 | 400 | 400 | 387 | 351 | 320 | 292 | |
| | 16-16 | 11'-8" | 13'-10" | 14'-0" | 11.90 | 4.31 | 177.9 | 146.4 | 6.44 | 400 | 400 | 400 | 400 | 400 | 400 | 400 | 400 | 400 | 400 | 391 | 358 | |
| 5-1/4" 40.4 psf 36.7 in ² | 20-20 | 8'-8" | 11'-7" | 11'-9" | 10.15 | 2.72 | 149.5 | 115.7 | 6.84 | 400 | 400 | 400 | 400 | 400 | 400 | 400 | 400 | 366 | 332 | 302 | 276 | |
| | 18-20 | 10'-10" | 12'-5" | 12'-10" | 10.49 | 2.99 | 138.3 | 101.8 | 6.84 | 400 | 400 | 400 | 400 | 400 | 400 | 391 | 351 | 317 | 287 | 261 | 238 | |
| | 18-18 | 10'-2" | 12'-1" | 12'-6" | 12.39 | 3.84 | 162.2 | 130.5 | 6.84 | 400 | 400 | 400 | 400 | 400 | 400 | 400 | 400 | 377 | 344 | 314 | | |
| | 16-18 | 11'-9" | 14'-1" | 13'-9" | 12.08 | 3.86 | 162.2 | 130.5 | 6.84 | 400 | 400 | 400 | 400 | 400 | 400 | 400 | 400 | 400 | 377 | 344 | 314 | |
| | 16-16 | 11'-5" | 13'-6" | 13'-10" | 13.58 | 4.63 | 191.9 | 157.5 | 6.84 | 400 | 400 | 400 | 400 | 400 | 400 | 400 | 400 | 400 | 400 | 400 | 386 | |
| 5 1/2" 42.8 psf 39 in ² | 20-20 | 8'-5" | 11'-5" | 11'-7" | 11.56 | 2.93 | 159.9 | 124.4 | 7.26 | 400 | 400 | 400 | 400 | 400 | 400 | 400 | 400 | 394 | 357 | 325 | 297 | |
| | 18-20 | 10'-7" | 12'-2" | 12'-7" | 11.95 | 3.22 | 148.1 | 109.6 | 7.26 | 400 | 400 | 400 | 400 | 400 | 400 | 400 | 379 | 342 | 310 | 282 | 257 | |
| | 18-18 | 10'-0" | 11'-10" | 12'-3" | 14.04 | 4.10 | 173.4 | 139.5 | 7.26 | 400 | 400 | 400 | 400 | 400 | 400 | 400 | 400 | 400 | 400 | 368 | 337 | |
| | 16-18 | 11'-7" | 13'-10" | 13'-7" | 13.75 | 4.15 | 173.4 | 139.5 | 7.26 | 400 | 400 | 400 | 400 | 400 | 400 | 400 | 400 | 400 | 400 | 400 | 368 | 337 |
| | 16-16 | 11'-2" | 13'-3" | 13'-8" | 15.41 | 4.96 | 205.8 | 168.8 | 7.26 | 400 | 400 | 400 | 400 | 400 | 400 | 400 | 400 | 400 | 400 | 400 | 400 | |
| 6-1/4" 50 psf 45.9 in ² | 20-20 | 7'-11" | 10'-9" | 10'-11" | 16.54 | 3.55 | 191.1 | 151.0 | 7.92 | 400 | 400 | 400 | 400 | 400 | 400 | 400 | 400 | 400 | 400 | 400 | 397 | 363 |
| | 18-20 | 9'-11" | 11'-6" | 11'-11" | 17.13 | 3.93 | 177.4 | 133.7 | 8.12 | 400 | 400 | 400 | 400 | 400 | 400 | 400 | 400 | 400 | 400 | 381 | 347 | 316 |
| | 18-18 | 9'-4" | 11'-3" | 11'-7" | 19.82 | 4.92 | 206.8 | 167.4 | 8.12 | 400 | 400 | 400 | 400 | 400 | 400 | 400 | 400 | 400 | 400 | 400 | 400 | |
| | 16-18 | 11'-0" | 13'-1" | 13'-1" | 19.61 | 5.05 | 206.8 | 167.4 | 8.12 | 400 | 400 | 400 | 400 | 400 | 400 | 400 | 400 | 400 | 400 | 400 | 400 | |
| | 16-16 | 10'-6" | 12'-7" | 13'-0" | 21.80 | 5.98 | 247.6 | 203.4 | 8.55 | 400 | 400 | 400 | 400 | 400 | 400 | 400 | 400 | 400 | 400 | 400 | 400 | |

6. Bending moment formulas used for flexural stress and deflection limitations in accordance with Steel Deck Institute are:

| Design | Moment | Deflection |
|------------|--|--|
| One Span | $M = fS = \frac{w \cdot L^2}{8} - 12$ | $D_{max} = \frac{0.0130 \cdot w \cdot L^4}{EI} - 172$ |
| Two Span | $M = fS = \frac{w \cdot L^2}{8} - 12$ | $D_{max} = \frac{0.0054 \cdot w \cdot L^4}{EI} - 1728$ |
| Three Span | $M = fS = \frac{w \cdot L^2}{10} - 12$ | $D_{max} = \frac{0.0069 \cdot w \cdot L^4}{EI} - 1728$ |

W = psf (kPa) L = ft. (MPa) E = 29.5 x 10⁶ psi (210,000 MPa) I = in⁴/ft. (mm⁴/m)

7. Cordeck guarantees that our 2" Cellular Floor Deck conforms to the Composite Steel Floor Deck Specifications of the Steel Deck Institute and the dimensional parameters established for the load table.

Material

1. Prime Painted

- Cellular deck shall receive one coat of standard gray primer paint over cleaned and pretreated steel.

- The primer coat is intended to protect the steel for only a reasonably short period of exposure, in normal atmospheric conditions, and shall be considered an impermanent and provisional coating.

- Field painting of prime painted material is recommended especially where the deck is exposed.

2. Galvanized

- All steel shall be coated to conform to ASTM A924 G-60 or G-90 or to Federal Specification QQ-S-775.
- Galvanized finish in G-60 or G-90 coating is desirable in high moisture atmospheric conditions.
- Cordeck shall not be responsible for the cleaning of the underside of steel deck to ensure bond of fireproofing. Adherence of fireproofing material is dependent on many variables. The adhesion ability of fireproofing materials is the responsibility of the fireproofing applicator.

3. Accessories

- Cordeck can supply ridge and valley plates, cant strips, finish strips, sump pans, end and side closures, pour stops, deck plate, rubber cell closures, screws, and other accessories needed to complete the project.

2.0" Cellular Floor Deck

SDI Member

1. All steel deck material is manufactured by Steel Deck Institute members or manufactured in accordance to SDI.
2. Cordeck certifies that all material will be in accordance with the SDI Cellular Deck Manual specifications.
3. Cordeck 2" Cellular Floor Deck conforms to all applicable SDI Cellular Deck Manual specifications.

Installation

1. Cordeck Cellular Floor Deck shall be installed by qualified and experienced workers.
2. Cellular floor deck installation drawings shall be submitted to the project architect and engineer for approval prior to the manufacture of materials.
3. Cellular floor deck shall be placed in accordance with approved erection drawings.
4. Deck sheets shall be butted over supports.
5. End bearing: install deck ends over supports with a minimum end bearing of 1-1/2" or as indicated on erection drawings.
6. Each deck unit shall be placed on supporting steel framework and adjusted to final positions before permanently fastened. Do not use unfastened deck as a working platform or storage area.
7. Cutting of openings through the deck and all skew cutting shall be performed in the field. Openings not shown on the erection drawings such as those required for stack, conduits, plumbing, vents, etc., shall be cut, and reinforced if necessary, in accordance with SDI.

Attachment

1. Cellular floor deck sheets shall be attached as soon as possible after placement. All sheets placed shall be attached prior to the end of each work day. Arc welding is the most commonly used method for attaching Cellular Deck to structural supports. Welder shall immediately follow the placement crew.
2. All welds are to be made from the top of the deck down through the bottom flange of the ribs. Welds shall penetrate and attach all thicknesses of material to the structural supports.

3. Caution shall be exercised on the selection of the electrodes to provide positive attachment and to prevent high amperage blow holes.
4. Puddle welds shall be at least 5/8" diameter or elongated puddle welds with an equal perimeter. Fillet welds, when used, shall be at least 1" long.
 - a. 2" Cellular Floor Deck ends shall be welded to structural supports at 12" on center maximum and 18" on center maximum at intermediate supports or as indicated on erection drawings.
 - b. Various mechanical fastening systems other than welding are recognized as viable anchoring methods provided they are reviewed, approved, or specified by the project designer. These include but are not limited to power-activated or pneumatically driven fasteners and screws.
 - c. Sheet to sheet, side laps shall be fastened together at a maximum spacing of 36 inches on center and perimeter edges at a maximum intervals of 12" on center or as indicated on erection drawings.

Attachment must be determined by the designer as part of the overall building design process. Values given in this document are adequate in most cases.

Storage and Handling

1. Protect steel deck from corrosion, deformation, and other damage during storage, handling, and installation.
2. Deck not promptly erected shall be stored off the ground, with one end elevated to provide drainage. Bundles must be protected against condensation with a ventilated waterproof covering. Deck should always be protected from snow and salt.
3. Bundles must be stacked so there is no danger of shifting or material damage. Bundles must be checked for tightness, and retightened as necessary.
4. Deck bundles on the building frame must always be placed near a main supporting beam at a column or wall. In no situation are the bundles to be placed on unbolted frames or on unattached and unbridged joists. The structural frame must be properly braced to receive the bundles.

"Whatever it takes"



Toll Free: 877.857.6400
Ph: 262.857.3000
Fx: 844.857.3533
www.cordeck.com

