



cellular deck

envision | design | support | expand | strengthen

whatever it takes, whenever you need it

about cellular deck

Cordeck's cellular deck provides an **ideal solution** for long spans, flat acoustical ceilings, canopies and raceways.

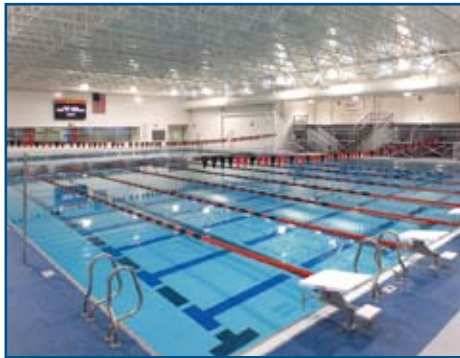
The addition of the bottom plate increases the span and load carrying capabilities allowing for longer spans.

Prompt lead times are our specialty. All orders are produced and shipped to you, when you want it.



Full project management and engineering services are offered by Cordeck's expert, in-house engineering and detailing services to assure optimal planning and design.

Our **experienced engineers and technicians provide** individual customer service and attention to detail from concept to completion.



about Cordeck services

AutoCAD® drawings. Can be transferred electronically via the internet or loaded onto a CD for **improved quality and reduced time and cost** of drawing transmittal.

Bundle placement plans. Are provided to ensure correct location of bundles during unloading and hoisting to steel framework.

SDI Membership. Manufacturing in accordance to the Steel Deck Institute guarantees product quality.

On-spec, guaranteed quality. Our production staff are true craftsmen, not just interested in getting the job done, but in doing it perfectly.

◁ **Knowledgeable, courteous, caring employees throughout our ranks.** We're a "family business" ... no "big corporate" attitude here! We genuinely appreciate our customers' patronage and trust, handling every order, regardless of size, with the utmost care and attention.

◁ **Prompt, reliable deliveries ...** often producing and shipping orders as quickly as within 24 hours.

◁ **Guaranteed quality.** Our production staff are true craftsmen, not just interested in getting the job done, but in doing it perfectly.

◁ **Large inventory of gauges and profiles** so Cordeck is prepared to get it there when you need it.

◁ **Cut to Length.** All orders are cut to your specifications to meet your on-site needs.

**At Cordeck,
we're devoted
to our customers.
We stand ready to
earn, and keep,
your full confidence
and trust.**

"When we

build

let us think that we build forever."

~John Ruskin, The Seven Lamps of Architecture (1849)

"I call architecture frozen
music"
Johann Wolfgang von Goethe

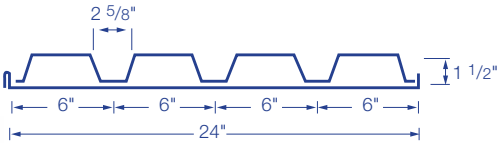
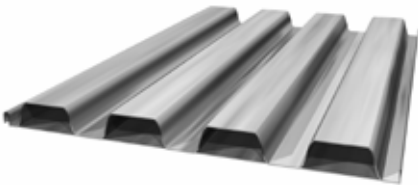


cellular roof deck



Cellular roof decks are **perfect for mezzanines, canopies and shelving applications.** These roof decks are available in a wide variety of gauges.

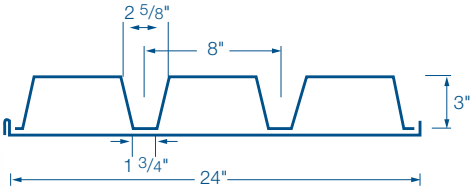
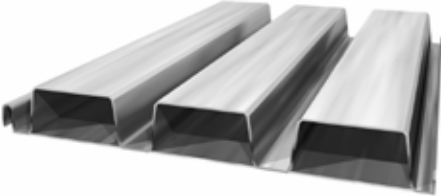
1.5" cellular roof deck



Also available acoustical.

Section Properties (per ft. of width)								
Gauge	Design Thickness in	F _y ksi	S _p in ³	S _n in ³	I _p in ⁴	I _n in ⁴	A _s in ²	W _d psf
20-20	0.0359 / 0.0359	33	0.297	0.420	0.280	0.332	1.04	4.0
18-20	0.0478 / 0.0359	33	0.616	0.454	0.529	0.404	1.24	4.6
18-18	0.0478 / 0.0478	33	0.451	0.570	0.407	0.477	1.42	5.2
16-18	0.0598 / 0.0478	33	0.814	0.646	0.716	0.559	1.58	5.8
16-16	0.0598 / 0.0598	33	0.616	0.724	0.524	0.637	1.85	6.3

3" cellular roof deck



Also available acoustical.

Section Properties (per ft. of width)								
Gauge	Design Thickness in	F _y ksi	S _p in ³	S _n in ³	I _p in ⁴	I _n in ⁴	A _s in ²	W _d psf
20-20	0.0359 / 0.0359	33	0.551	0.842	1.012	1.372	1.29	4.4
18-20	0.0478 / 0.0359	33	0.856	0.928	1.322	1.665	1.53	5.2
18-18	0.0478 / 0.0478	33	0.846	1.229	1.552	1.947	1.68	5.7
16-18	0.0598 / 0.0478	33	1.215	1.294	1.892	2.259	1.91	6.5
16-16	0.0598 / 0.0598	33	1.133	1.635	1.892	2.571	2.06	7.0

Panel Profile	Absorption Coefficient						NRC	Glass Fiber Roof Insulation
	125 HZ	250 HZ	500 HZ	1,000 HZ	2,000 HZ	4,000 HZ		
BW-A	0.53	0.95	1.02	0.96	0.55	0.30	0.85	1-7/8"
N-A	0.93	1.26	1.09	0.90	0.56	0.37	0.95	2"
1-1/2" Cellular-A	0.20	0.33	0.74	1.00	0.57	0.41	0.65	2"
3" Cellular-A	0.46	0.64	1.12	0.99	0.76	0.58	0.90	2"



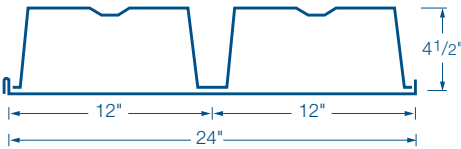
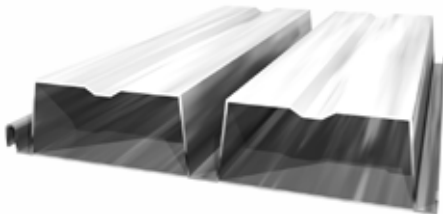
deep cellular roof deck



Perforated acoustical roof decks are designed to serve as a **sound absorption element** as well as a **structural roof deck**. Typical applications for acoustical deck are in gymnasiums, theaters and over indoor pools. The perforation pattern is a 5/32"-diameter hole staggered at 3/8" on center.

The sound-absorbing elements consist of fiberglass insulation batts that are **inserted at our facility prior to delivery**. We also offer a floating clip insulation option for post painting purposes, as well as an encapsulated insulation for aquatic applications.

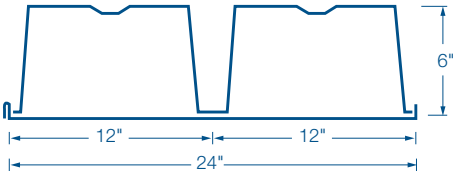
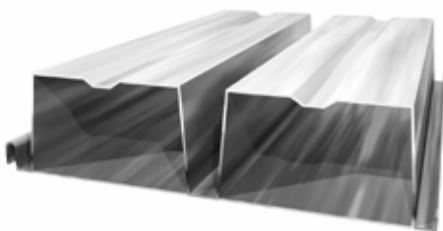
4.5" deep cellular roof deck



Also available acoustical.

Section Properties (per ft. of width)									
Gauge	Design Thickness in	F _y ksi	S _p in ³	S _n in ³	I _p in ⁴	I _n in ⁴	A _s in ²	W _d psf	
20-20	0.0359 / 0.0359	33	1.278	1.121	3.800	2.970	1.35	4.6	
18-20	0.0478 / 0.0359	33	2.302	1.262	5.361	3.589	1.56	5.3	
18-18	0.0478 / 0.0478	33	1.943	1.629	5.558	4.209	1.73	5.9	
16-18	0.0598 / 0.0478	33	3.119	1.736	7.190	4.826	1.97	6.7	
16-16	0.0598 / 0.0598	33	2.708	2.179	7.514	5.526	2.15	7.3	

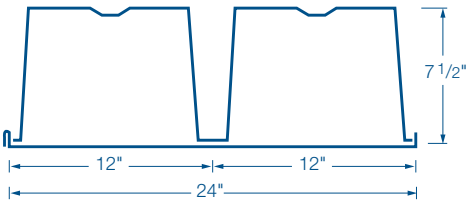
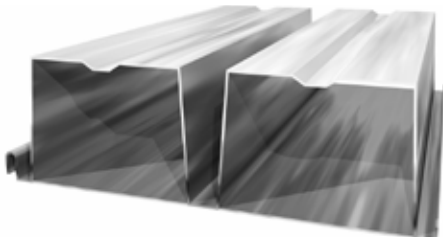
6" deep cellular roof deck



Also available acoustical.

Section Properties (per ft. of width)									
Gauge	Design Thickness in	F _y ksi	S _p in ³	S _n in ³	I _p in ⁴	I _n in ⁴	A _s in ²	W _d psf	
20-20	0.0359 / 0.0359	33	1.606	1.652	6.450	5.763	1.47	5.0	
18-20	0.0478 / 0.0359	33	3.035	1.820	9.465	6.865	1.76	6.0	
18-18	0.0478 / 0.0478	33	2.456	2.524	7.659	8.372	1.91	6.5	
16-18	0.0598 / 0.0478	33	4.113	2.625	12.705	9.499	2.17	7.4	
16-16	0.0598 / 0.0598	33	3.688	3.358	13.341	10.932	2.35	8.0	

7.5" deep cellular roof deck



Also available acoustical.

Section Properties (per ft. of width)									
Gauge	Design Thickness in	F _y ksi	S _p in ³	S _n in ³	I _p in ⁴	I _n in ⁴	A _s in ²	W _d psf	
20-20	0.0359 / 0.0359	33	2.031	2.077	10.268	9.219	1.59	5.4	
18-20	0.0478 / 0.0359	33	3.994	2.298	15.471	10.972	1.91	6.5	
18-18	0.0478 / 0.0478	33	3.323	3.337	15.687	13.753	2.06	7.0	
16-18	0.0598 / 0.0478	33	5.392	3.565	20.694	15.829	2.35	8.0	
16-16	0.0598 / 0.0598	33	4.890	4.467	21.787	18.004	2.53	8.6	

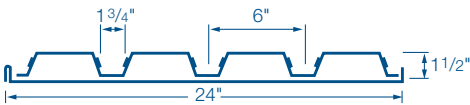
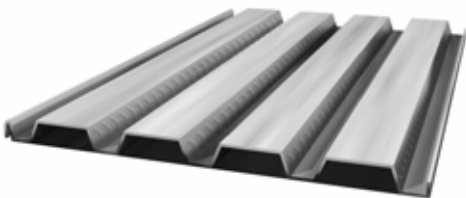
cellular floor deck



Cellular floor decks provide **longer clear spans**, hidden systems fasteners and are designed to provide an aesthetically pleasing, linear appearance. Acoustical cellular floor deck **reduces noise levels** in building interiors. They are perfect for gymnasiums, office buildings, libraries, and more.

The sound-absorbing elements consist of fiberglass batts that are inserted at our facility prior to delivery.

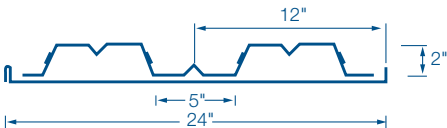
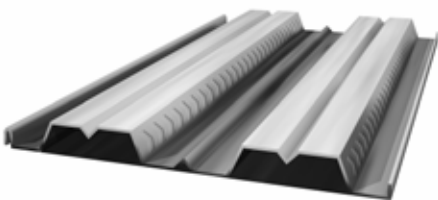
1.5" cellular floor deck



Also available acoustical.

Section Properties (per ft. of width)								
Gauge	Design Thickness in	F _y ksi	S _p in ³	S _n in ³	I _p in ⁴	I _n in ⁴	A _s in ²	W _d psf
20-20	0.0359 / 0.0359	50	0.277	0.411	0.252	0.325	1.06	3.6
18-20	0.0478 / 0.0359	40	0.589	0.442	0.514	0.396	1.26	4.3
18-18	0.0478 / 0.0478	40	0.440	0.566	0.421	0.467	1.41	4.8
16-18	0.0598 / 0.0478	40	0.546	0.785	0.700	0.700	1.47	5.0
16-16	0.0598 / 0.0598	40	0.726	0.734	0.917	0.954	1.64	5.6

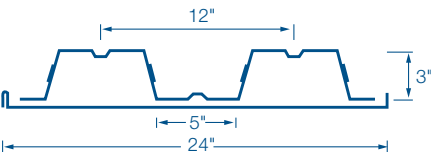
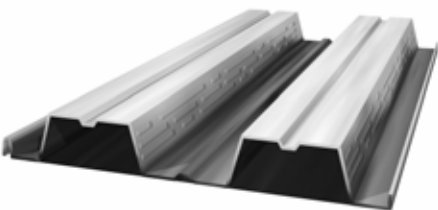
2" cellular floor deck



Also available acoustical.

Section Properties (per ft. of width)								
Gauge	Design Thickness in	F _y ksi	S _p in ³	S _n in ³	I _p in ⁴	I _n in ⁴	A _s in ²	W _d psf
20-20	0.0359 / 0.0359	50	0.356	0.423	0.453	0.483	0.98	3.3
18-20	0.0478 / 0.0359	40	0.654	0.610	0.738	0.638	1.15	3.9
18-18	0.0478 / 0.0478	40	0.594	0.579	0.871	0.724	1.32	4.4
16-18	0.0598 / 0.0478	40	0.794	0.793	0.891	0.886	1.46	5.0
16-16	0.0598 / 0.0598	40	0.726	0.734	0.917	0.954	1.63	5.6

3" cellular floor deck



Also available acoustical.

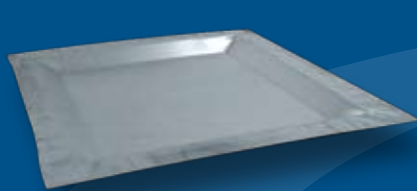
Section Properties (per ft. of width)								
Gauge	Design Thickness in	F _y ksi	S _p in ³	S _n in ³	I _p in ⁴	I _n in ⁴	A _s in ²	W _d psf
20-20	0.0359 / 0.0359	50	0.588	0.669	1.095	1.114	1.04	3.6
18-20	0.0478 / 0.0359	40	1.042	0.965	1.735	1.507	1.24	4.2
18-18	0.0478 / 0.0478	40	0.879	0.916	1.691	1.562	1.42	4.8
16-18	0.0598 / 0.0478	40	1.248	1.246	2.076	2.066	1.58	5.4
16-16	0.0598 / 0.0598	40	1.161	1.148	2.136	2.218	1.76	6.0

sheet metal & trim accessories

Cordeck uses **state-of-the art equipment** for extremely accurate parts creation. The experience and dedication of our certified technicians means **consistent**

product quality and the ability to meet the challenge of even the most sophisticated part requirements. All projects are **geared to your**

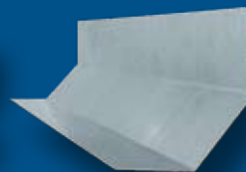
complete satisfaction: made to your individual specifications, with short lead times and prompt delivery to all locations.



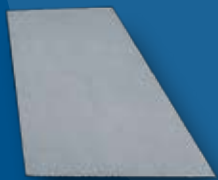
sumppan



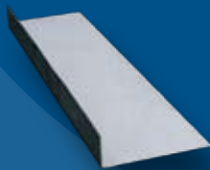
rubberclosures



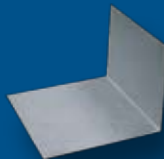
parapetflashing



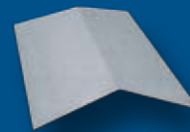
deckplate



sideclosure



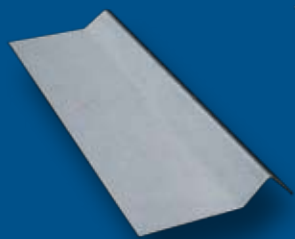
angleclosure



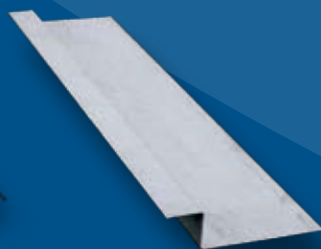
ridgeplate



valleyplate



finishstrip



zclosure



jchannel



endclosure



tekscrews

“can do ... whatever it takes”



Headquartered in Kenosha, Wisconsin, KAM Industries, Ltd., d/b/a Cordeck operates a modern, efficient manufacturing plant, encompassing almost 100,000 square feet on 20 acres. Cordeck's manufacturing lines include **Cellular Deck, Roof Deck, Floor Deck, Form Deck, Electrified Deck Systems**, and related accessories. Our products are strong and corrosion resistant, featuring Galvanized, Galvanized Prepainted and Cold Rolled Prepainted Steels, Kynar 500® trim, structural-grade, with G90 or G60 zinc-galvanized coatings.

Each member of our team is a prized contributor to customer satisfaction and Cordeck's advancement. Our centralized location facilitates **prompt, efficient production and shipping** to our many, loyal customers, throughout the United States, North America and beyond.

The company was formally established in 1995, though our founders offer the benefits of **over 30 years, hands-on experience** in ironworking and building construction. Truly, **"iron" runs through Cordeck's veins!** Since the firm's beginning, sales have shown strong and steady growth. That success has been galvanized by **our employees' unwavering, total dedication to unparalleled customer satisfaction.**



Toll Free: 877.857.6400 | Ph: 262.857.3000 | Fx: 262.857.3533 | www.cordeck.com

©2009 KAM industries, Ltd., d/b/a/Cordeck

