



r o o f   d e c k

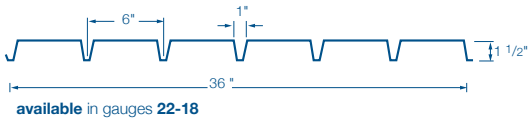
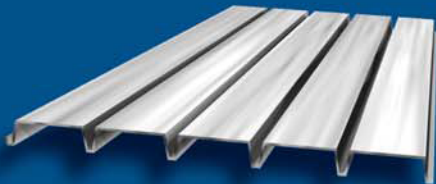


s e r v i c e   |   d e p e n d a b i l i t y   |   s u p p o r t

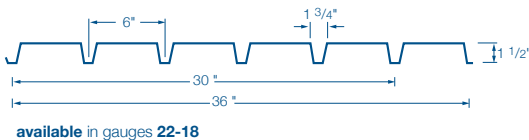
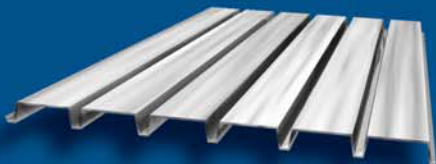
*whatever it takes, whenever you need it*

# roofdeck

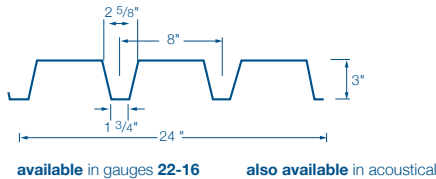
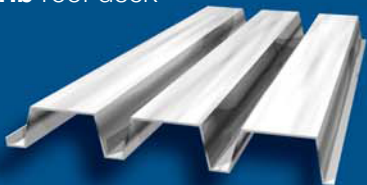
## 1.5" "A" narrow rib roof deck



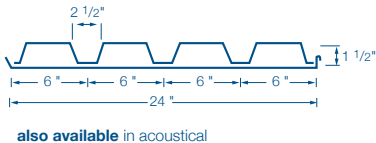
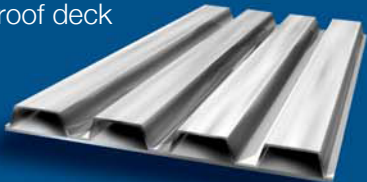
## 1.5" "F" intermediate rib roof deck



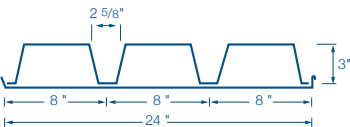
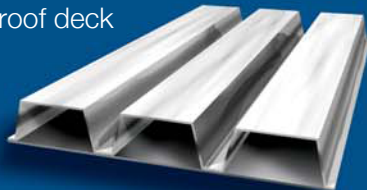
## 3" "N" deep rib roof deck



## 1.5" cellular roof deck

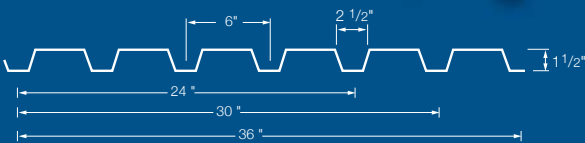
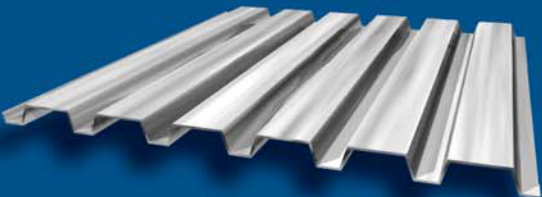


## 3.0" cellular roof deck



**roofs**, mezzanines, canopies & shelving  
**produced** to length specifications  
**short** lead time & prompt delivery  
**various** finishes

# 1.5" "B" wider rib roofdeck



available in gauges 22-16 also available in acoustical

## section properties, type B-36, B-30 and B-24

type	design thickness	I in. <sup>4</sup> /ft.	Sp in. <sup>3</sup> /ft.	S <sub>n</sub> in. <sup>3</sup> /ft.	weight - psf	
					galv.	ptd.
22	.0295	.164	.192	.198	1.81	1.73
20	.0358	.212	.243	.255	2.16	2.08
18	.0474	.306	.331	.341	2.85	2.77

## allowable uniform total load, PSF-type B-36, B-30 and B-24

		spans(ft.)													
number of spans	type	3.5	4	4.5	5	5.5	6	6.5	7	7.5	8	8.5	9	9.5	10
one	22	207	158	125	101	84	70	60	52	45	40	35	31	28	25
	20	262	201	158	128	106	89	76	65	57	50	44	40	36	32
	18	356	273	215	175	144	121	103	89	78	68	60	54	48	44
two	22	213	163	129	105	86	73	62	53	46	41	36	32	29	26
	20	275	210	166	135	111	93	80	69	60	53	47	42	37	34
	18	368	281	222	180	149	125	107	92	80	70	62	56	50	45
three	22	267	204	161	131	108	91	77	67	58	51	45	40	36	33
	20	343	263	208	168	139	117	100	86	75	66	58	52	47	42
	18	460	352	278	225	186	156	133	115	100	88	78	70	62	56

**recommended maximum spans for construction maintenance load**  
standard for 1.5" wide rib roof deck as published by the SDI.

design	22ga	20ga	18ga
one span	5'6"	6'3"	7'6"
two or more spans	6'6"	7'5"	8'10"
max recommended cantilever spans	1'11"	2'4"	2'10"

**factory mutual approved spans**  
for Cordeck's wide rib roof deck

22ga	6'0"
20ga	6'5"
18ga	7'5"



# sheetmetal, roofdeck & miscellaneousaccessories

**state-of-the-art equipment**  
for extremely accurate part creation

**capability**  
for even the most sophisticated part requirements

**certified technicians**  
dedicated to consistent product quality

**produced**  
to individual specifications

**pvc strippable film**  
to protect product finish

**wide selection**  
of custom color finishes

**short lead times**  
and prompt delivery to all locations



**sumppan**



**rubberclosures**



**parapetflashing**



**deckplate**



**sideclosure**



**angleclosure**



**ridgeplate**



**valleyplate**



**finishstrip**



**zclosure**



**jchannel**



**capeavetrim**



**highendtrim**



**detailedvalley**



**gravelstop**



**copingcap**



**gablecaptrim**



**tekscrews**



**Headquartered in Kenosha, Wisconsin, KAM Industries, Ltd., d/b/a Cordeck** operates a **modern, efficient manufacturing plant, encompassing almost 100,000 square feet** on 20 acres. Cordeck's manufacturing lines include **Roof Deck, Floor Deck, Form Deck, Electrified Deck Systems**, and related accessories. Our products are strong and corrosion resistant, featuring Galvanized, Galvanized Prepainted and Cold Rolled Prepainted Steels, Kynar 500® trim, structural-grade, with G90 or G60 zinc-galvanized coatings.

Each member of our team is a prized contributor to customer satisfaction and Cordeck's advancement. Our centralized location facilitates **prompt, efficient production and shipping** to our many, loyal customers, throughout the United States, North America and beyond.

The company was formally established in 1995, though our founders offer the benefits of **over 30 years, hands-on experience** in ironworking and building construction. **Truly, "iron" runs through Cordeck's veins!** Since the firm's beginning, sales have shown strong and steady growth. That success has been galvanized by **our employees' unwavering, total dedication to unparalleled customer satisfaction.**

*whatever it takes, whenever you need it*