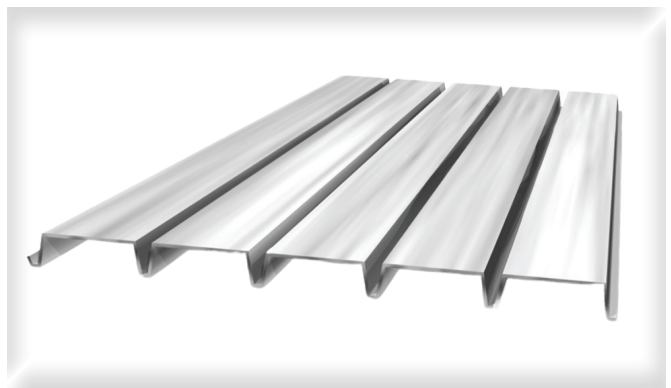
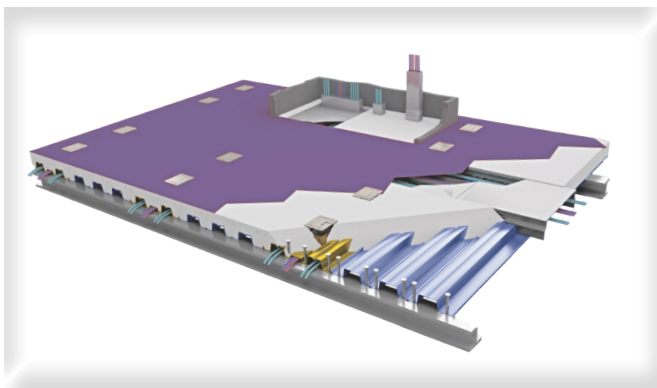
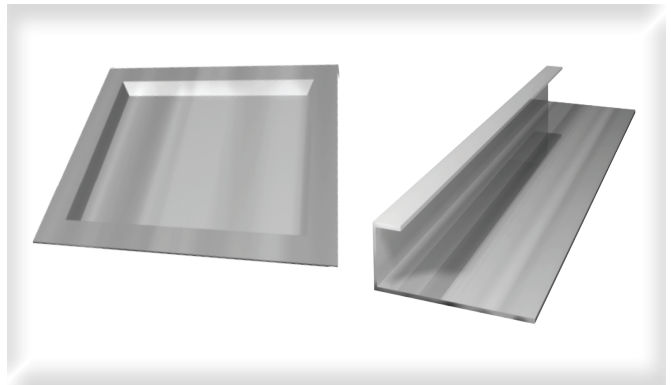
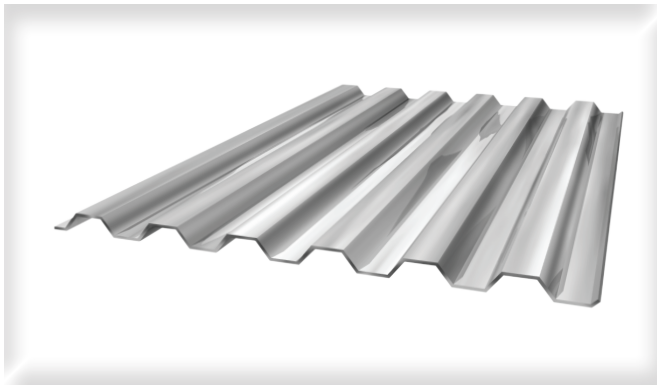


Product & Capabilities



envision | design | support | expand | strengthen

Our Story

Established in 1994, Cordeck is a full-service, nationwide, manufacturer and distributor of high-quality metal decking and metal deck accessories. At Cordeck, we pride ourselves on creating strong, long-lasting relationships that continues to shape the construction industry. To help achieve this, we have two distinct business units, **CORDECK METAL DECK SOLUTIONS** and **CORDECK INNOVATIVE SOLUTIONS®**. While both product lines are manufactured in Kenosha, WI., We have 6 locations throughout the U.S. to provide fast, convenient deliveries to our clients.

In addition to our two business units, we also provide a wide variety of metal deck accessories and added a Bystronic fiber laser. This state-of-art machine allows us to bring your custom project parts to life with ease and precision.

To elevate the success of our clients, full project management and engineering services are offered by Cordeck's expert, in-house engineering and detailing services to assure optimal planning and design. Our staff is with you from **concept to completion**.

At Cordeck we care about your needs and will go out of our way to make sure that you receive the service you deserve.

My family has served the construction industry for over 50 years and we will proudly continue to uphold this family tradition.

~ Ken Moore, President



Our Mission/Vision

Our Mission

To provide **excellent** customer service.

Our Vision

We will continue to do **“Whatever It Takes”** to lead the industry in service while establishing nationwide name recognition. Our dedication to clients, community and employees will remain strong by building long-term relationships, finding solutions and providing personal growth opportunities. Through continuous improvement programs and market analysis, we will seek and determine expansion opportunities throughout the country.

Our Locations

Cordeck Is Your **Nationwide** Resource For High-Quality Metal Decking And Metal Deck Accessories.

CORPORATE OFFICE

METRO CHICAGO

12620 Wilmot Road
Kenosha, WI 53142

CINCINNATI

175 Westheimer Drive
Middletown, OH 45044

DALLAS/FT. WORTH

415 Topeka Ave
Justin, TX 76247

HOUSTON

1507 Madge Street
Houston, TX 77039

MEMPHIS

6726 Whitten Place
Memphis, TN 38133

METRO NEW YORK

200 Pond Ave 1B
Middlesex, NJ 08846

Roof Deck

1.5" B Wide Rib Roof Deck

- Available Widths: 36" (Contact Us For Additional Widths)
- Available Gauges: 22, 20, 18, 16

1.5" A Narrow Rib Roof Deck

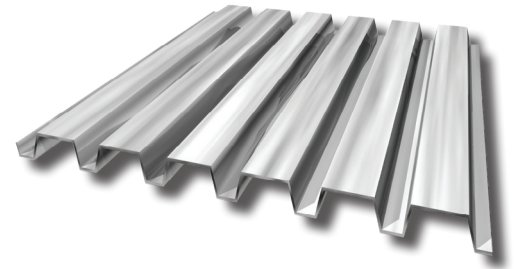
- Available Widths: 36"
- Available Gauges: 22, 20, 18

1.5" F Intermediate Rib Roof Deck

- Available Widths: 36"
- Available Gauges: 22, 20, 18

3.0" N Deep Rib Roof Deck

- Available Widths: 24"
- Available Gauges: 22, 20, 18, 16



For Available Finishes
Visit Cordeck.com
or
Speak to a Dexpert®
877-857-6400

Form Deck

0.6" Form Deck

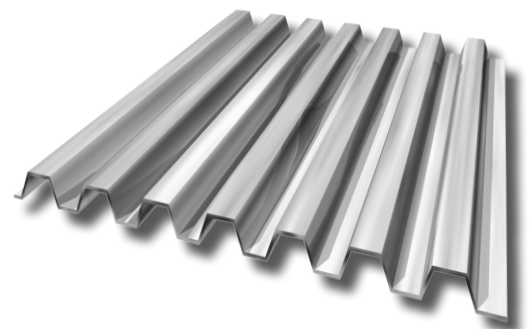
- Available Widths: 30" (Contact Us For Additional Widths)
- Available Gauges: 28, 26, 24, 22

1.0" Form Deck

- Available Widths: 36"
- Available Gauges: 26, 24, 22, 20

1.5" Form Deck

- Available Widths: 36"
- Available Gauges: 24, 22, 20, 18



Composite Floor Deck

1.5" Composite Floor Deck

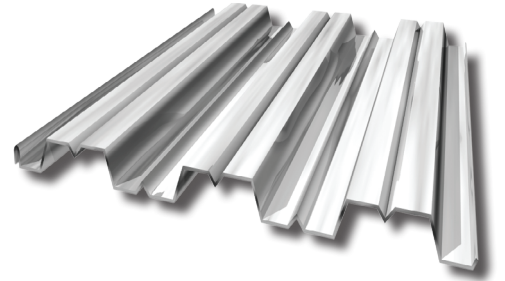
- Available Widths: 36"
- Available Gauges: 22, 20, 18, 16

2.0" Composite Floor Deck

- Available Widths: 36" (Contact Us For Additional Widths)
- Available Gauges: 22, 20, 18, 16

3.0" Composite Floor Deck

- Available Widths: 36" (Contact Us For Additional Widths)
- Available Gauges: 22, 20, 18, 16



Cellular Roof Deck

1.5" B Cellular Roof Deck

- Available Widths: 24"
- Available Gauges: 20/20, 20/18, 18/20, 18/18, 18/16, 16/18, 16/16

3.0" N Cellular Roof Deck

- Available Widths: 24"
- Available Gauges: 20/20, 20/18, 18/20, 18/18, 18/16, 16/18, 16/16

4.5" Deep Cellular Roof Deck

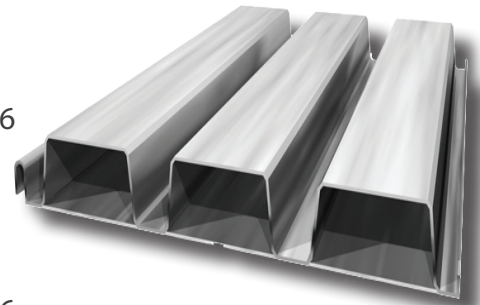
- Available Widths: 24"
- Available Gauges: 20/20, 20/18, 18/20, 18/18, 18/16, 16/18, 16/16

6.0" Deep Cellular Roof Deck

- Available Widths: 24"
- Available Gauges: 20/20, 20/18, 18/20, 18/18, 18/16, 16/18, 16/16

7.5" Deep Cellular Roof Deck

- Available Widths: 24"
- Available Gauges: 20/20, 20/18, 18/20, 18/18, 18/16, 16/18, 16/16



For Available Finishes
Visit Cordeck.com
or
Speak to a Dexpert®
877-857-6400

Composite Floor Deck

1.5" Cellular Composite Floor Deck

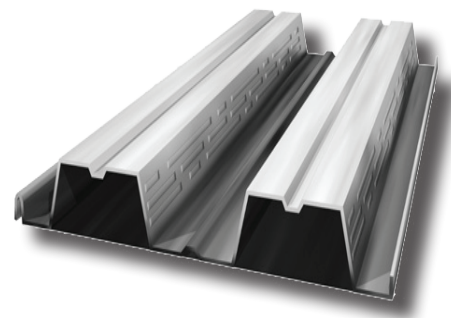
- Available Widths: 24"
- Available Gauges: 20/20, 20/18, 18/20, 18/18, 18/16, 16/18, 16/16

2.0" Cellular Composite Floor Deck

- Available Widths: 24"
- Available Gauges: 20/20, 20/18, 18/20, 18/18, 18/16, 16/18, 16/16

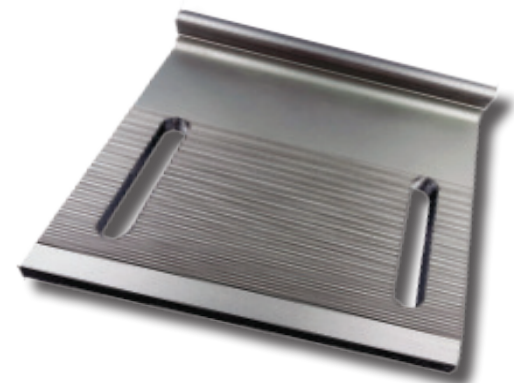
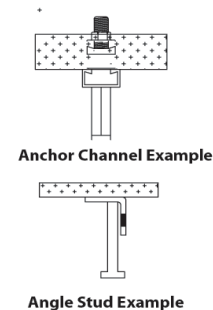
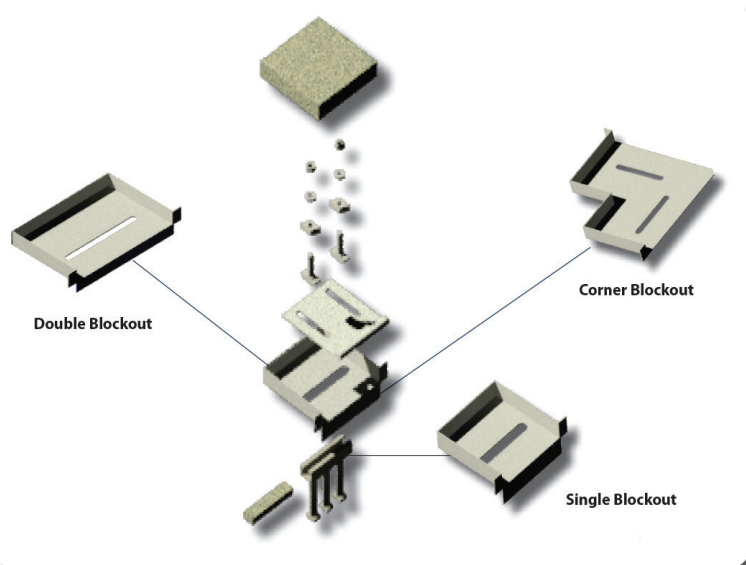
3.0" Cellular Composite Floor Deck

- Available Widths: 24"
- Available Gauges: 20/20, 20/18, 18/20, 18/18, 18/16, 16/18, 16/16



Anchor Channel Box Blockouts

Our Embed Solutions Are Designed To Ease Structural Connections With Curtain Wall And Window Wall Structures.

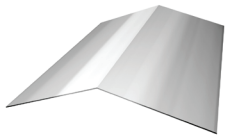


We design Anchor Channel Box Blockouts specific to your project specifications.

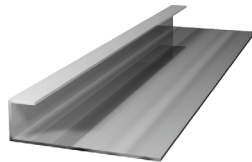
Metal Deck Accessories

In Addition To These Accessories, Our Cnc-Controlled Press Brakes And Folding Machines, Precise Sheering Capabilities, On-Site Engineering Services, And Short Lead Times Mean That We Can Produce Architectural, Roofing, Or Construction Parts To Your Specific Needs. A Cordeck **Dexpert**® Can Help You Identify Exactly What's Needed For Your Project.

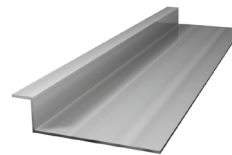
Ridge Plate



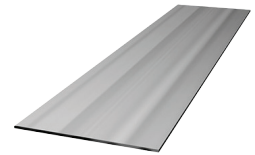
J Closure



Z Closure



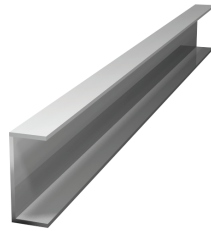
Column Closure



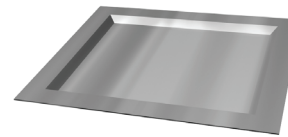
Bent Plate



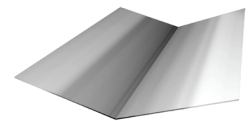
Channel Closure



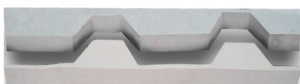
Sump Pan



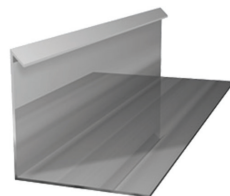
Valley Plate



Rubber Closure



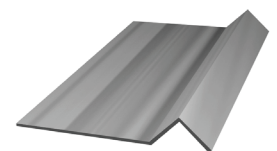
Pour Stop



Angle Closure



Finish Strip



TEK Screws



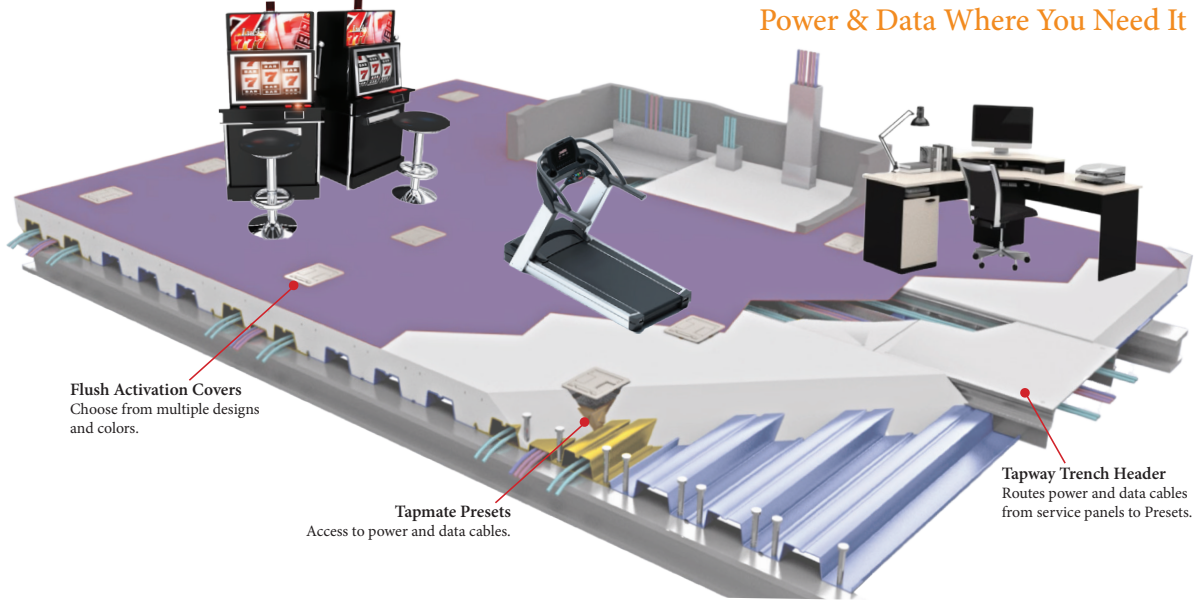
Welding Washers



Let Us Be Your **One-Stop Shop** For All Your Metal Decking Needs!

In Floor Cellular Raceways

Our Innovative System Will Organize And Protect Your Power And Data Cables While Allowing For Complete Design Freedom.

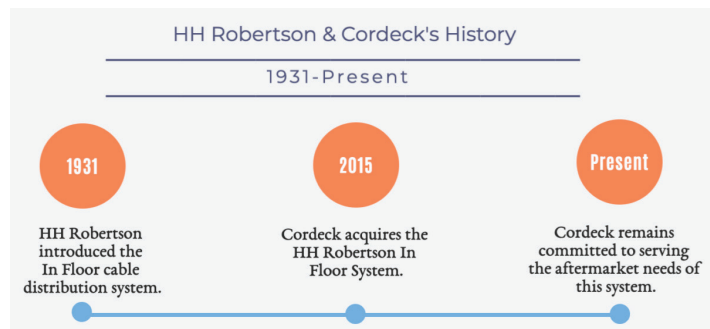
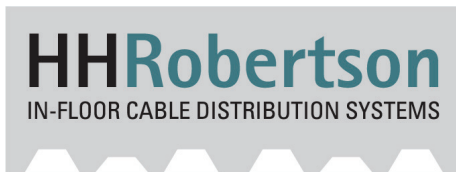


Ideal For:

Casinos • Libraries • Fitness Centers • Office Buildings • Higher Education Facilities • Government Offices

HH Robertson™

The Hh Robertson™ In Floor Cable Distribution Systems Has Been A Part Of The Cordeck Family Of *Innovative Floor Solutions*® Since 2015 And We Remain Committed To Serving The Aftermarket Needs Of This System.



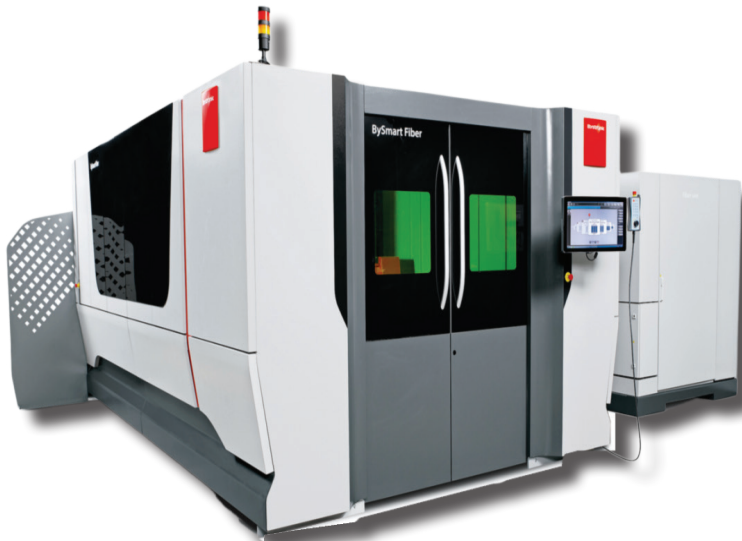
infloorsystem@cordeck.com | 800-932-0706 | cordeck.com

Laser Cutting Services

Our State-Of-The-Art Laser Is The Most Efficient In Laser Cutting. The Laser Beam Is Created By An Active Fiber And Transmitted Over A Transport Fiber To The Machines Cutting Head. Fiber Lasers Are Significantly Smaller Than CO₂ Lasers And Generate Several Times The Power From The Same Amount Of Current. A Fiber Cutting System Is Primarily Suited For Processing Thin To Thick Sheet Metal From Steel, Stainless Steel, Aluminum And Also Other Non-Ferrous Metals (Copper & Brass).

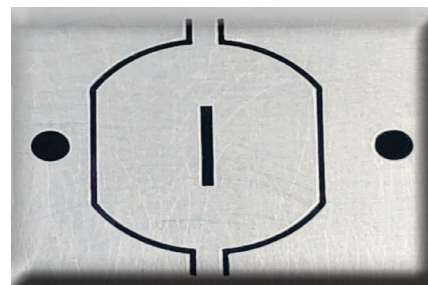
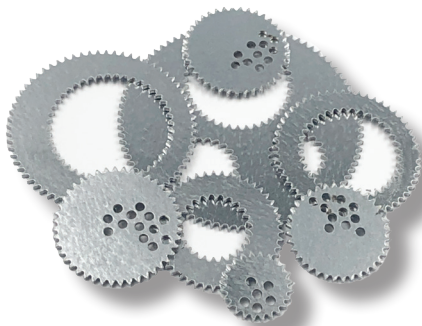
This Means We Can:

- Provide intricate enhancements when processing our quality steel deck products in house
- Cut & cleanly remove parts without a secondary tooling process to remove burrs
- Assist you with overflow on your lines or run parts on a regular basis
- Production for short run, prototype and long runs



BYSTRONIC FIBER LASER 3015
Cordeck Headquarters - Kenosha, WI

Our CAD Engineers are ready to work with you to bring your custom parts to life with ease and precision with our state-of-the-art machine.



sales@cordeck.com | 877-857-6400 | cordeck.com

Additional Services

Our Experienced Engineers, Project Managers, And Dexpert® Staff Provide Full Project Management With Individual Customer Service And Attention To Detail From **Concept** To **Completion**.

Services We Provide

- AutoCAD® drawings and BIM model provided to reduced time and cost of drawing transmittal.
- Material takeoffs and ordering.
- Design build assistance.
- DEXPERT® advice.
- Value engineering.
- Submittal and installation drawings.
- Installation support.
- Bundle placement plans are provided to ensure correct location of bundles during unloading and hoisting to steel framework.
- Project manager support for every project through completion.
- On-spec, guaranteed quality. Our production staff are true craftsmen, not just interested in getting the job done but in doing it perfectly.

Quality Assurance

- Cordeck is a Steel Deck Institute (SDI) Member, fully certified to manufacture roof deck, form deck, cellular roof deck and composite floor deck.
- Cordeck products meets FM and ICC-ES requirements.



sales@cordeck.com | 877-857-6400 | cordeck.com

Our Work



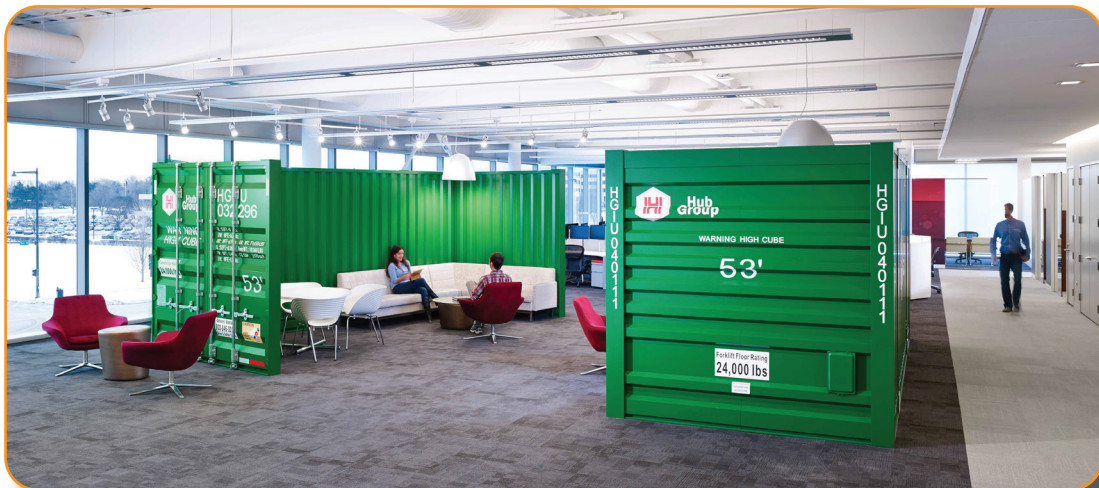
Navy Pier Wave Wall, Chicago, IL



River Point Tower, Chicago, IL



CenturyLink Technology Center of Excellence, Monroe, LA



HUB Group Headquarters, Oak Brook IL



12620 Wilmot Rd • Kenosha, WI 53142
sales@cordeck.com • 877-857-6400 • cordeck.com

Metro Chicago | Cincinnati | Dallas/Ft. Worth | Houston | Memphis | Metro New York