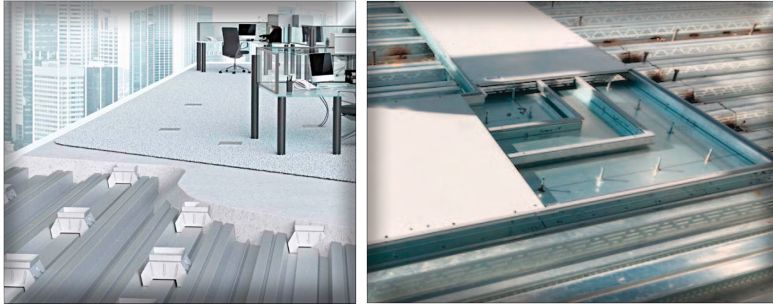
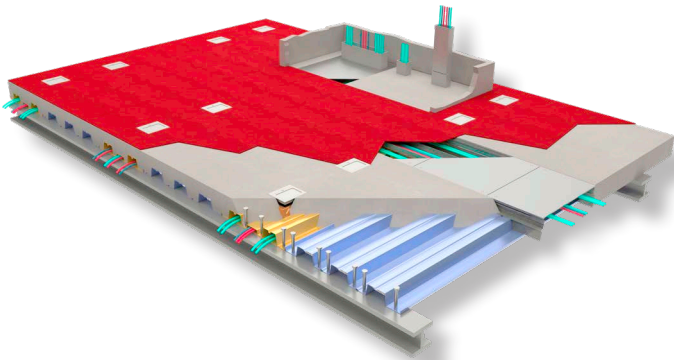




WHATEVER IT TAKES | WHENEVER YOU NEED IT



HORSESHOE
HAMMOND



HARRAH'S HORSESHOE CASINO Hammond, IN

Architect:

Friedmutter Group
Newport Beach, CA

General Contractor:

Pepper Construction Group
Chicago, IL

Electrical Engineer:

Giovanetti Shulman Associates
Broomall, PA

Cordeck System:

N-R-G-FLOR®
In Floor Cellular Raceway System

Construction on Harrah's Horseshoe Casino in Hammond, IN began in late 2006 and opened in 2008. This 350,000 square foot, \$485 million casino was built on six barges on the waters of Lake Michigan. The casino floor includes nearly 3200 slots, 97 table games, video poker, Keno, and a world class poker room. There are five restaurants and a multi-purpose theatre, with the venue designed to draw Las Vegas style entertainment to the region.

The N-R-G-FLOR® In Floor Cellular Raceway system was installed on four stories of this six story casino, built on six barges. The electrical engineer designed a custom In Floor System utilizing one outboard deck cell for data. The center cell, typically used for power was used as a "spare" for future low voltage use.

Our Innovative In Floor Cellular Raceway is an In-Slab Wire Management System That Delivers Power and Data Where You Need it

VISIT OUR WEBSITE FOR A VIDEO INTRODUCTION TO OUR N-R-G-FLOR+® SYSTEM

infloorsystems@cordeck.com | 877-857-6400 | cordeck.com