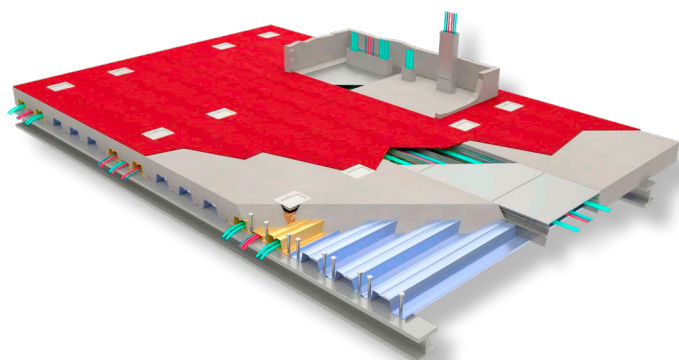
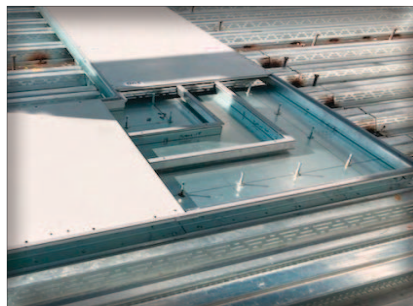
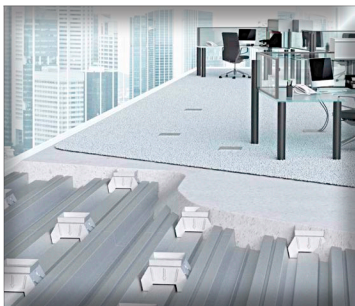




WHATEVER IT TAKES | WHENEVER YOU NEED IT



HOLLYWOOD PARK CASINO Toledo, OH

Architect:

Urban Design Group
Atlanta, GA

Electrical Engineer:

Kuhlmann Design Group
St. Louis, MO

General Contractor:

Rudolph/Libbe, Inc.
Walbridge, OH

Electrical Contractor:

Gem, Inc.
Walbridge, OH

Cordeck System:

N-R-G-FLOR+®
In Floor Cellular Raceway System

Casino gaming came to Toledo, Ohio in the form of the \$250 million Hollywood Casino, which features 125,000 square feet of gaming space including 2000 slots, 60 gaming tables, and a poker room.

Cordeck was pleased to provide the In Floor Cellular Raceway System as well as the metal decking for the entire casino structure.

“The entire electrified floor system is operating flawlessly. I recognize Cordeck for their excellent performance during the construction of the casino. During the design phase of the project they were very helpful in establishing the correct specification, purchase, and installation of the electrified deck work seamlessly. Our installation supervisors, ironworker’s, and electricians received complete training of the system.”

-James Russell
Gem, Inc

Our Innovative In Floor Cellular Raceway is an In-Slab Wire Management System That Delivers Power and Data Where You Need it

VISIT OUR WEBSITE FOR A VIDEO INTRODUCTION TO OUR N-R-G-FLOR+® SYSTEM

infloorsystems@cordeck.com | 877-857-6400 | cordeck.com