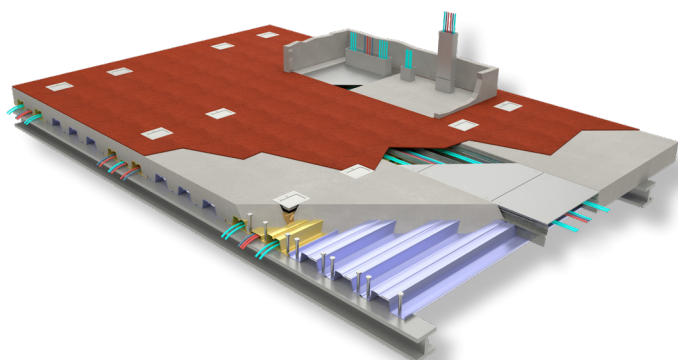
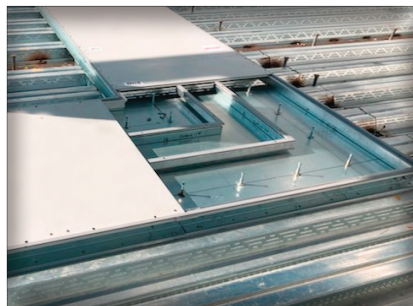
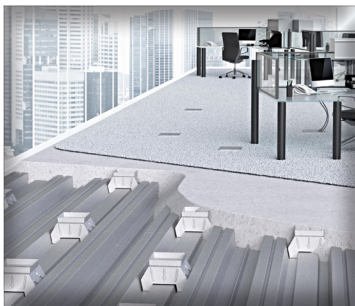




WHATEVER IT TAKES | WHENEVER YOU NEED IT



NORTHERN ILLINOIS FOOD BANK Geneva, IL

Architect:

Rockford Associates, Inc
Rockford, IL

General Contractor:

Ryan Company
Naperville, IL

Structural Engineer:

Larson Engineering
Naperville, IL

Electrical Engineer:

Larson Engineering
Naperville, IL

Cordeck System:

Walkerdeck®
In Floor Cellular Raceway System

Founded in 1983, The Northern Illinois Food Bank had outgrown their facility and was ready to expand. The new Food Distribution and Community Nutrition Center was designed to store and distribute even more food and develop additional programs.

Cordeck's Walkerdeck® Cellular Floor System was chosen because it allowed the design and build team to control expenses while accommodating unique structural design elements. This custom built Food Distribution and Community Nutrition Center serves over 60,000 people throughout 13 counties each week. With technology equipped classrooms, the Food Bank conducts seminars for it's 600 partner agencies and community groups.

Our Innovative In Floor Cellular Raceway is an In-Slab Wire Management System That Delivers Power and Data Where You Need it

VISIT OUR WEBSITE FOR A VIDEO INTRODUCTION TO OUR N-R-G-FLOOR+® SYSTEM

infoorsystems@cordeck.com

877-857-6400

cordeck.com