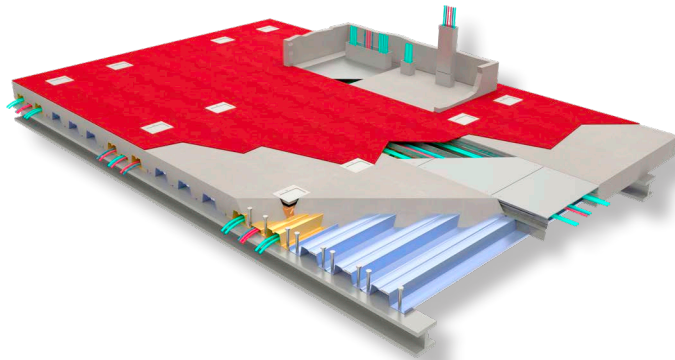
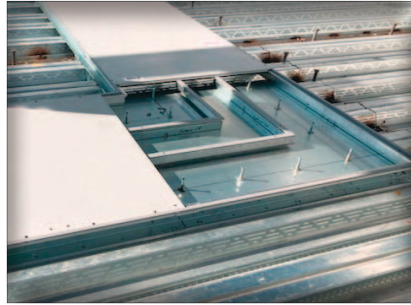
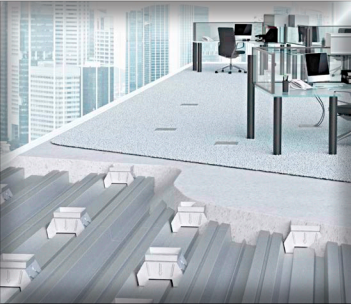




WHATEVER IT TAKES | WHENEVER YOU NEED IT



HOLLYWOOD CASINO York, PA

Architect:

JCJ Architecture
New York, NY

General Contractor:

W.E. O'Neil
Chicago, IL

Structural Engineer:

The Harman Group
King of Prussia, PA

Electrical Contractor:

Battaglia Electric, Inc
New Castle, DE

Cordeck System:

N-R-G-FLOR+®
In Floor Cellular Raceway System

Located in Pennsylvania, the Hollywood Casino York is an 80,000 square foot facility features 500 slot machines and 24 table games.

Cordeck's In Floor Raceway system was the right choice for this casino. With numerous power and data activation points located at finished floor level, our system provides Hollywood York Casino the flexibility to adapt to technology changes and the freedom to refresh their gaming floor, at any time, with minimal disruption to their patrons.

Our Innovative In Floor Cellular Raceway is an In-Slab Wire Management System That Delivers Power and Data Where You Need it

VISIT OUR WEBSITE FOR A VIDEO INTRODUCTION TO OUR N-R-G-FLOR+® SYSTEM

infloorsystems@cordeck.com | 877-857-6400 | cordeck.com