



CORDECK
building solutions

Products and Capabilities

imagine | design | support | innovation | reliability



**Together, we can
build anything.**

Who We Are

At Cordeck, we are proud to deliver high-quality metal decking and accessories across the United States from our strategically located facilities. Since 1994, we have been manufacturing corrugated metal decking, steel deck accessories, in-floor cellular raceway systems, and offering precision laser cutting services. Wherever you need our products, Cordeck ensures you receive them quickly and reliably.

We pride ourselves on creating strong, long-lasting relationships that continue to shape the construction industry. To achieve this, we have two distinct business units: CORDECK METAL DECK SOLUTIONS and CORDECK INNOVATIVE SOLUTIONS®. Cordeck manufactures in Kenosha, WI and Denton, TX and distributed from our eight (and growing) locations throughout the U.S., providing fast, convenient deliveries to our clients.

In addition to our two business units, we offer a wide variety of metal deck accessories and have added a Bystronic fiber laser. This state-of-the-art machine allows us to bring your custom project parts to life with ease and precision.

To elevate the success of our clients, we provide full project management and engineering services through Cordeck's expert in-house engineering and detailing team, ensuring optimal planning and design. Our dedicated staff is with you from concept to completion.

“At Cordeck, we care about your needs and will go out of our way to ensure that you receive the service you deserve.

My family has served the construction industry for over 50 years, and we will proudly continue to uphold this family tradition.”

— Ken Moore, President

OUR MISSION

To provide excellent customer service.

OUR VISION

We will continue to do “Whatever It Takes” to lead the industry in service while establishing nationwide name recognition. Our dedication to clients, community and employees will remain strong by building long-term relationships, finding solutions and providing personal growth opportunities. Through continuous improvement programs and market analysis, we will seek and determine expansion opportunities throughout the country.

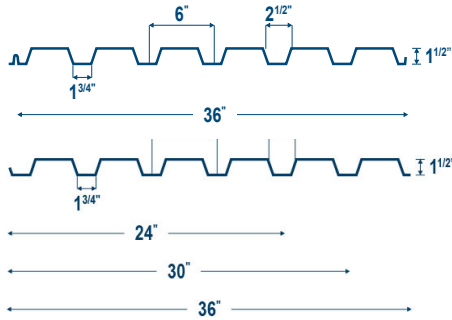


**VIEW ALL OF
OUR LOCATIONS**



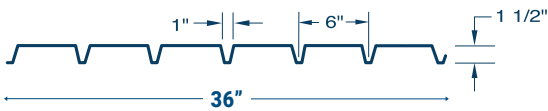
ROOF DECK

1.5" B Wide Rib Roof Deck



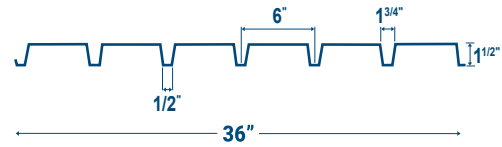
- Available Widths: 24", 30", 36"
(Contact Us For Additional Widths)
- Available Gauges: 22, 20, 18, 16

1.5" A Narrow Rib Roof Deck



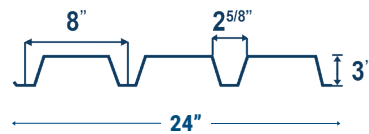
- Available Widths: 36"
- Available Gauges: 22, 20, 18

1.5" F Intermediate Rib Roof Deck



- Available Widths: 36"
- Available Gauges: 22, 20, 18

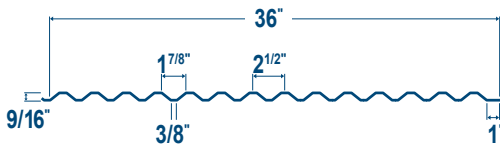
3.0" N Deep Rib Roof Deck



- Available Widths: 24", 32"
- Available Gauges: 22, 20, 18, 16

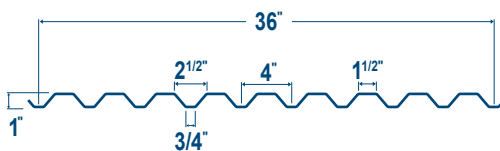
FORM DECK

0.6" Form Deck



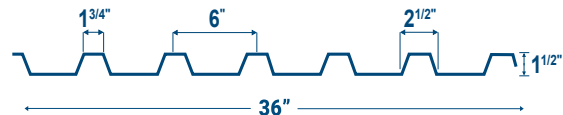
- Available Widths: 36"
(Contact Us For Additional Widths)
- Available Gauges: 28, 26, 24, 22

1.0" Form Deck



- Available Widths: 36"
- Available Gauges: 26, 24, 22, 20

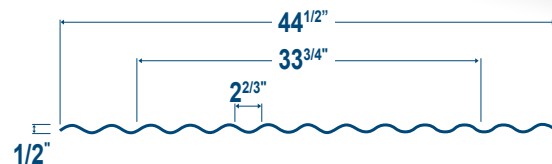
1.5" Form Deck



- Available Widths: 36"
- Available Gauges: 24, 22, 20, 18

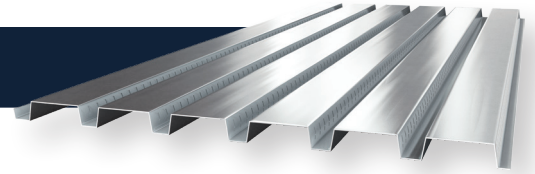
PANELS

Container Panels

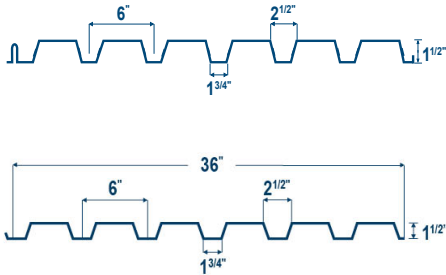


- Available Widths: 33.75", 44.5"
- Available Gauges: 10G, 12G

COMPOSITE FLOOR DECK



1.5" Composite Floor Deck



2.0" Composite Floor Deck



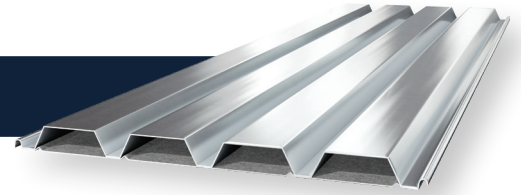
3.0" Composite Floor Deck



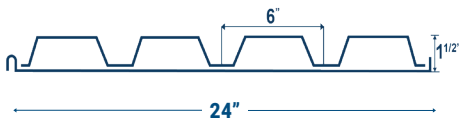
COMPOSITE FLOOR DECK WIDTHS AND GAUGES

- Available Widths: 24", 36"
- Available Gauges: 22, 20, 18, 16

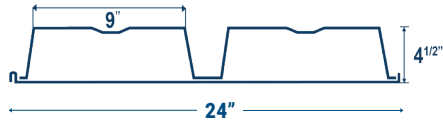
CELLULAR ROOF DECK



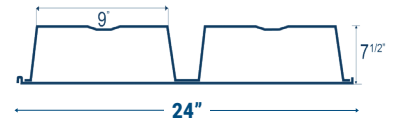
1.5" B Cellular Roof Deck



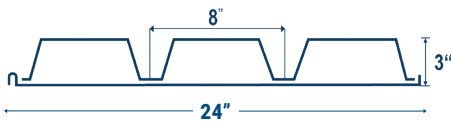
4.5" Deep Cellular Roof Deck



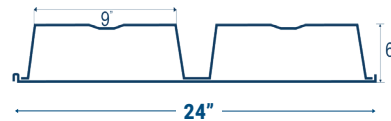
7.5" Deep Cellular Roof Deck



3.0" N Cellular Roof Deck



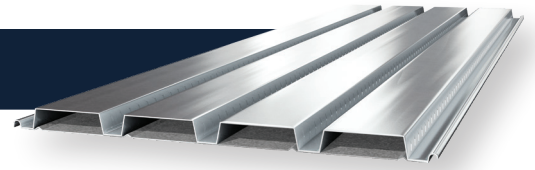
6.0" Deep Cellular Roof Deck



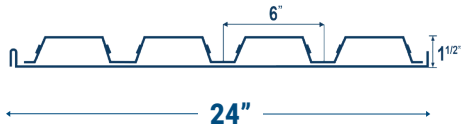
CELLULAR ROOF DECK WIDTHS AND GAUGES

- Available Widths: 24"
- Available Gauges: 20/20, 20/18, 18/20, 18/18, 18/16, 16/18, 16/16

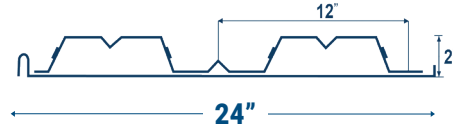
CELLULAR COMPOSITE FLOOR DECK



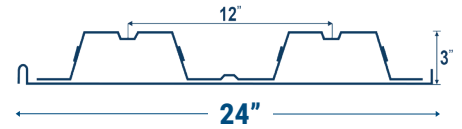
1.5" Cellular Composite Floor Deck



2.0" Cellular Composite Floor Deck



3.0" Cellular Composite Floor Deck

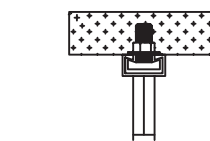
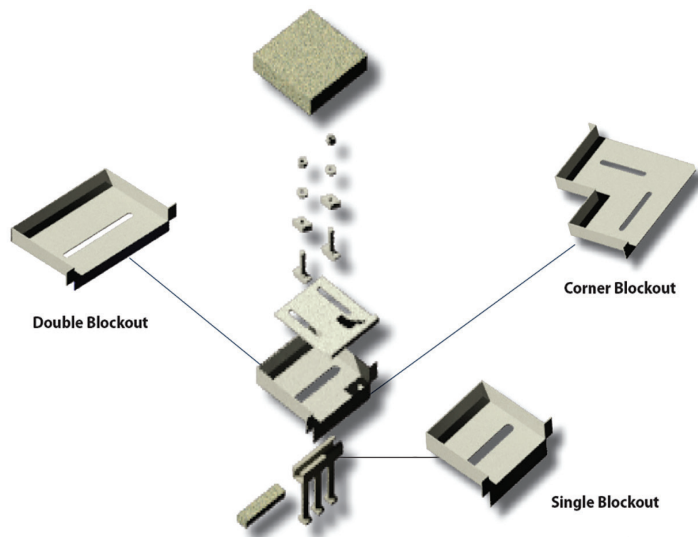


CELLULAR COMPOSITE FLOOR DECK WIDTHS AND GAUGES

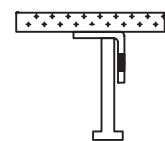
- Available Widths: 24"
- Available Gauges: 20/20, 20/18, 18/20, 18/18, 18/16, 16/18, 16/16

ANCHOR CHANNEL BOX BLOCK-OUTS

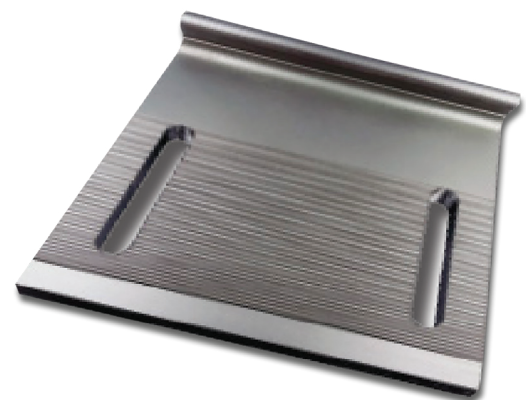
Our Embed Solutions Are Designed To Ease Structural Connections With Curtain Wall And Window Wall Structures.



Anchor Channel Example



Anchor Stud Example



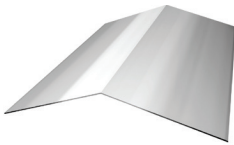
We design Anchor Channel Box Block-outs specific to your project specifications.

For Available Finishes Visit Cordeck.com or Speak to a Dexpert® 877-857-6400

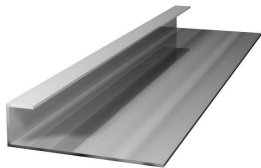
METAL DECK ACCESSORIES

In Addition To These Accessories, Our CNC-Controlled Press Brakes And Folding Machines, Precise Sheering Capabilities, On-Site Engineering Services, And Short Lead Times Mean That We Can Produce Architectural, Roofing, Or Construction Parts To Your Specific Needs. A Cordeck Dexpert® Can Help You Identify Exactly What's Needed For Your Project.

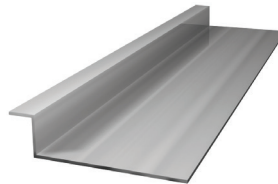
Ridge Plate



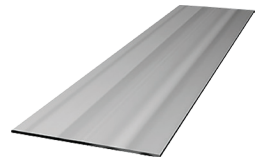
J Closure



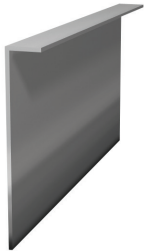
Z Closure



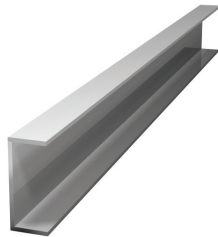
Column Closure



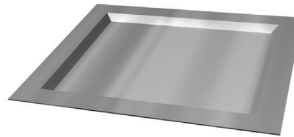
Bent Plate



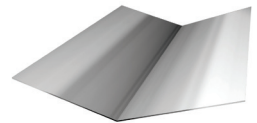
Channel Closure



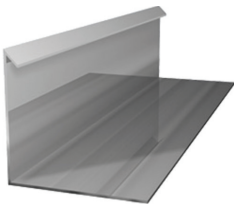
Sump Pan



Valley Plate



Pour Stop



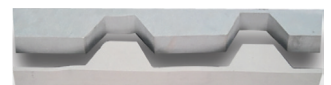
Angle Closure



Finish Strip



Rubber Closure



TEK Screws



Welding Washers



Let Us Be Your **One-Stop Shop**
For All Your Metal Decking Needs!

sales@cordeck.com | 877-857-6400 | cordeck.com

IN SLAB IN FLOOR WIRE AND CABLE MANAGEMENT:

Your Project, Our System, Flexibility for the Future

For architects, engineers, and building owners, Cordeck's In Floor Cellular Raceway Systems and N-R-G-FLOR+® Structure & Wire Management are the ultimate solutions for efficient and secure power and data management. Explore the flexibility and economic benefits of our system and let us support your project from start to finish.

N-R-G-FLOR+®

Our system not only manages, organizes, and protects your power and data, but it also offers endless design possibilities. With Cordeck, you can create a flexible, future-proof infrastructure that adapts to your evolving needs.

IDEAL APPLICATIONS INCLUDE:



Casinos



Fitness Centers



Libraries



K-12 and Universities



Call Centers



Hybrid Use Office Space

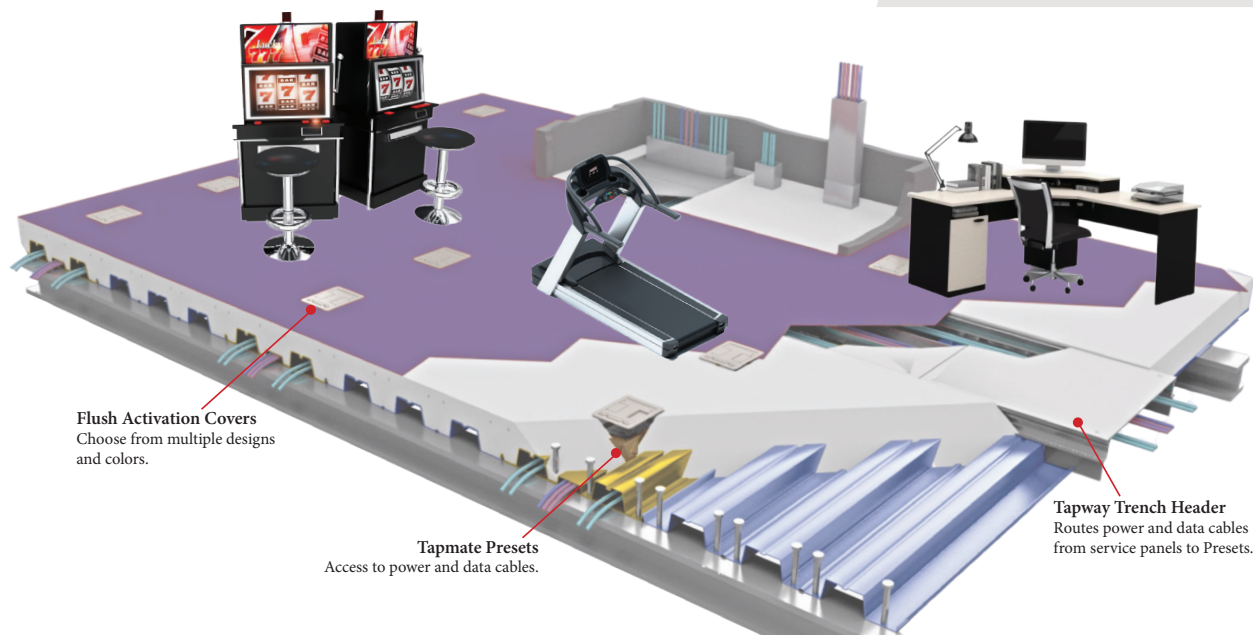


Office Buildings



Airports

Power and data where you need it.



HHRobertson
IN-FLOOR CABLE DISTRIBUTION SYSTEMS

FOR AFTERMARKET: The HH Robertson™ In Floor Cable Distribution Systems has been a part of the Cordeck family of Innovative Floor Solutions® since 2015, and we remain committed to serving the aftermarket needs of this system.

sales@cordeck.com | 877-857-6400 | cordeck.com

Laser Cutting Services

At Cordeck, our Laser Cutting Services are where state-of-the-art technology meets unparalleled craftsmanship. We provide advanced laser cutting solutions designed to meet your needs, no matter where you are in the nation. Whether your project involves ferrous or non-ferrous metals, our versatile system delivers exceptional results.

KEY FEATURES OF OUR LASER CUTTING SERVICES:

Efficient Laser Technology:

Our laser beam is created by an active fiber and transmitted over a transport fiber to the machine's cutting head. Fiber lasers are significantly smaller than CO2 lasers and generate several times the power from the same amount of current, making them highly efficient.

Versatile Material Processing:

Our fiber cutting system is ideally suited for processing a wide range of materials, from thin to thick sheet metal, including steel, stainless steel, aluminum, and other non-ferrous metals such as copper and brass.



BYSMART FIBER

BENEFITS:

Intricate Enhancements:

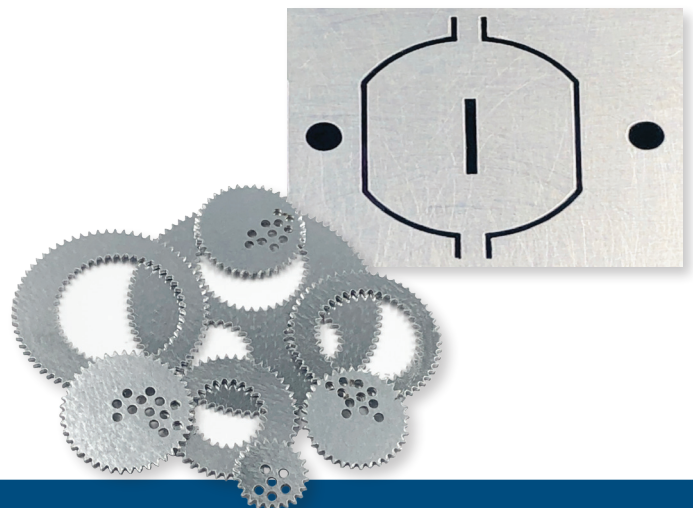
We provide intricate enhancements when processing our quality steel deck products in-house. This ensures that every piece meets the highest standards of accuracy and craftsmanship.

Clean Cuts:

Our laser system can cut and cleanly remove parts without requiring a secondary tooling process to remove burrs. This ensures a smooth finish, streamlining the production process and enhancing the quality of your final product.

Flexible Production Options:

We can assist you with overflow on your lines or run parts on a regular basis. Our production capabilities are suitable for short runs, prototypes, and long production runs.



Our CAD engineers are ready to collaborate with you to bring your custom parts to life with ease and precision using our state-of-the-art machine. Whether you need intricate parts or high-volume production, Cordeck's laser cutting services are here to meet your needs.

Our Services

At Cordeck, our experienced engineers, project managers, and Dexpert® staff deliver comprehensive project management with personalized customer service and meticulous attention to detail from concept to completion.

SERVICES WE PROVIDE:

- **AutoCAD® Drawings and BIM Models:** Reducing time and cost of drawing transmittal.
- **Material Takeoffs and Ordering:** Efficient and accurate.
- **Design Build Assistance:** Expert guidance throughout the design process.
- **DEXPERT® Advice:** Specialized knowledge and support.
- **Value Engineering:** Optimizing project value and performance.
- **Submittal and Installation Drawings:** Detailed and precise.
- **Installation Support:** On-site assistance for smooth installation.
- **Bundle Placement Plans:** Ensuring correct location of bundles during unloading and hoisting to steel framework.
- **Project Manager Support:** Dedicated project manager for every project through completion.
- **Guaranteed Quality:** On-spec products with guaranteed quality.

Our production staff are true craftspeople, dedicated to perfection.



CERTIFICATIONS AND COMPLIANCE



Steel Deck Institute (SDI) Member:
Fully certified to manufacture roof deck, form deck, cellular roof deck, and composite floor deck.




FM and ICC-ES Compliance: Cordeck products meet all necessary requirements.



UL Approved: Cordeck products are UL approved.

Cordeck is committed to delivering high-quality products and exceptional service for all your construction needs.



**“Good buildings come from
good people, and all problems
are solved by good design.”**

— Stephen Gardiner



Request a Quote:



cordeck.com



sales@cordeck.com



877-857-6400

Cordeck Offers:

One-Hour Quotes

Same Day/Next-Day Delivery

Laser Cutting Services

In-Floor Cellular Raceway Systems

View all of our Locations:

Corporate Headquarters
12620 Wilmot Rd
Kenosha, WI 53142



Connect With Us:



PROCAPJUNE25